



Fire pump control panel



water supply/booter pump control panel



Submersible pump control panel



Inverter pump control panel
(standard type)



Inverter pump control panel
(double-layer door)



Inverter pump control panel
(double-layer door with touch screen)



Multiple inverter systems inside layout

▲ It is adequate for all kinds of EVERGUSH water pumps

Main fire pump sets & jockey pumps	Water supply pumps, Auto booster pump systems	Submersible sewage/sump pumps	Inverter booster pump systems
			



Product Features

- Adopting Chinese National Standard(CNS) of fire fighting pump codes: CNS8917,CNS8918,CNS8919.
- Automatic sprinkler system operation for fire protection.(When pipeline pressure is lower than preset pressure, the pump will starts.
- According to fire protection law, after the pump automatically switches on, an operator must manually stops it.) Force start operation with manual test function.(running and stop button)
Provides with fuse breaker and electrical circuit.
- Layout of control panel, it will show voltmeter, ammeter, running, overload, stop and malfunction indicators. Malfunction alert output.
- Built-in remote control for manual ON-OFF switch and remote monitor for operation, stop, overload and water shortage signal.

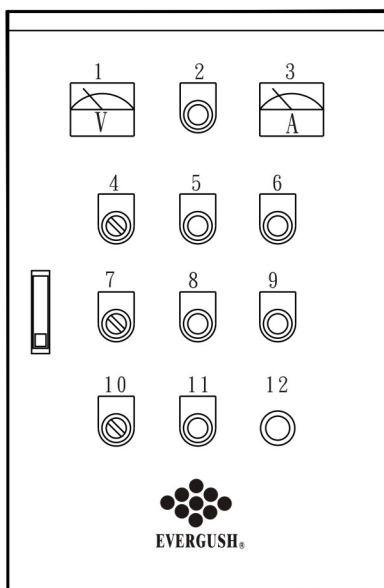
Panel



Fire-fighting pump set

Control panel instructions

Control panel layout



Instruction

No.	Name	No.	Name
1	Voltmeter	7	ON Alarm OFF
2	Power(white)	8	Stop(green)
3	Ammeter	9	Water Shortage (orange)
4	Man.,Stop,Auto.	10	Man.,Stop,Auto. for jockey pump
5	Running(red)	11	Jockey pump running (red)
6	Overload(orange)	12	Buzzer

Remarks:

1. Panel can be classified as single layer or double layer door.
2. Item 10 and 11 will only install for sprinkler systems.

▲ Dimensions

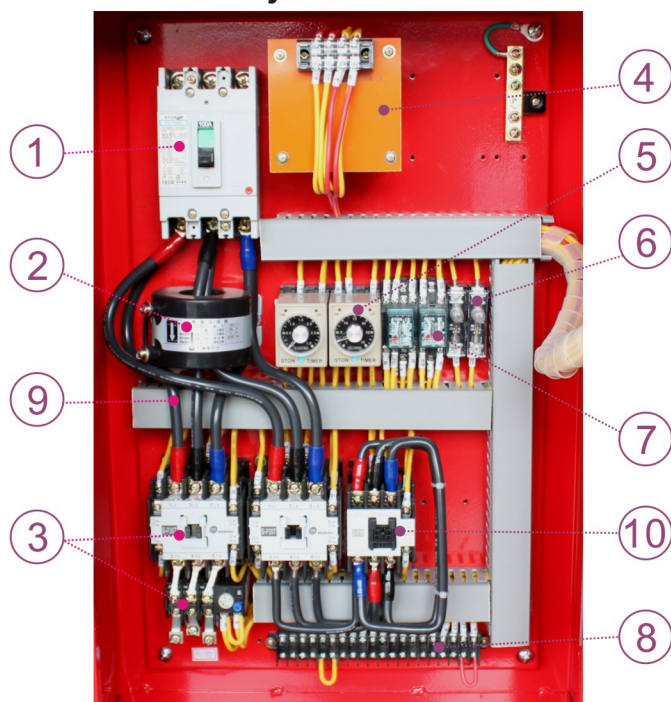
● Indoor type control panel

Classification		Horsepower (HP)	UNIT: MM			STD. Material
			W	H	D	
220V	Direct Start	5~10	365	480	190	Iron
	Y-△	15~25	405	640	220	Iron
		30~60	505	800	240	Iron
		75~100	605	1050	270	Iron
		125~150	700	1150	300	Iron
380V	Direct Start	5~10	365	480	190	Iron
	Y-△	15~40	405	640	220	Iron
		50~100	505	800	240	Iron
		125~150	605	1050	270	Iron

Remarks: 1. Appearance, material, dimension, coating...etc. All can be custom made by customer requirements.
2. More than 150HP control panel is available upon request.

▲ Main parts

● Standard fire pump control panel: Inside layout



● Above graph is Y-△ start method
(For reference only)

● Components table

NO.	Name	NO.	Name
1	No fuse breaker	6	Fuse
2	Current transformer	7	Aux. relay
3	Magnetic switch	8	Terminal block
4	Transformer	9	Flame-resistant wire
5	Timer relay	10	Magnetic contactor

Remarks:

- Standard : Single-layer window indoor type, and its material is steel made powder coating (SS41). We can customize stainless steel casing(SUS304) or double-layer windows or outdoor type.
- We can add earth leakage circuit breaker or soft start/stop device depend on customer special requirements. We can also change flame-resistant wire into DN non-toxic flame-resistant wire.
- Components table and inside layout usually vary with different horsepowers and control methods.