



# Comprehensive Catalog

EST. 1969



Power and Pumping for a better Life!



ASIA AUTOMATIC PUMP CO., LTD  
[www.evergushpump.com.tw/en](http://www.evergushpump.com.tw/en)





1. Asia Automatic Pump Co., Ltd. was established in Kaohsiung City, Taiwan in 1969 and created its own brand "EVERGUSH". EVERGUSH is the pioneer in Taiwan to produce household booster pumps, fire-fighting pumps and inverter constant pressure pump systems.

2. EVERGUSH is committed to manufacturing and developing various types of water pumps, including domestic water pumps, centrifugal pumps, submersible sewage pumps, industrial pumps, deep well pumps, multi-stage pumps, VFD pumps, etc. Currently we have more than 50 series of pumps with more than 4,000 specifications.

3. In 2009, EVERGUSH successfully developed various types of water pump control panels and completed the control panel assembly line.

4. In 2015, EVERGUSH started to develop diesel generator sets, and gradually built production lines and testing & Inspection centers.

5. EVERGUSH's new headquarters in Kaohsiung, Taiwan was completed at the end of 2018.

- Expanded to 16,500 square meters area.
- Expanded Automatic equipment, production lines and testing quality control devices.
- Successfully obtained TAF laboratory certification for electric motors.
- Successfully obtained TAF laboratory certification for water pumps.
- Successfully obtained TAF laboratory certification for diesel gensets.

6. Today, EVERGUSH has 1 headquarters, 6 branches and 4 OEM factories in Taiwan. For the global market, EVERGUSH's products have been exported to more than 45 countries.

7. Focus, innovation and quality are the corporate beliefs of EVERGUSH. We make excellent products, superior quality and efficient after-sales service so that users of EVERGUSH pumps and generator sets can enjoy the joy of using water and electricity. Power and Pumping for a better life!



In response to the government's environmental protection and new energy policies, our new factory built a scaffold-mounted solar power system on rooftop with a total capacity of 260.4 kWp. It can produce more than 320,000 kWh of clean energy a year, close to the factory's need for self-sufficient power. Each year, about 200 tons of carbon emissions can be reduced. It can effectively reduce indoor temperature of the building and reduce the use of air-conditioning. In addition, turf grass is planted on the rooftop, greening the environment and promoting environmental sustainability.





# CERTIFICATIONS



◎ TAF (ILAC-MRA) Lab. Certificate

◎ ISO9001:2015 Certificate

◎ ISO14001:2015 Certificate

◎ ISO45001:2018

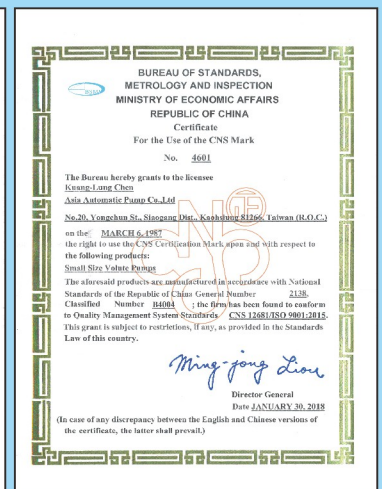
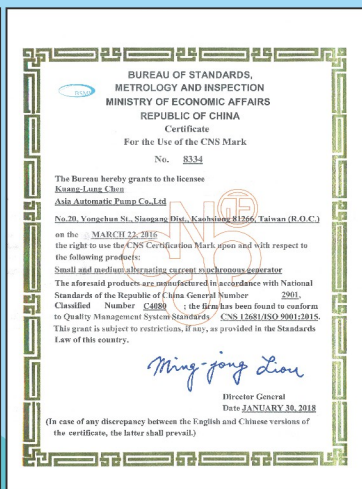
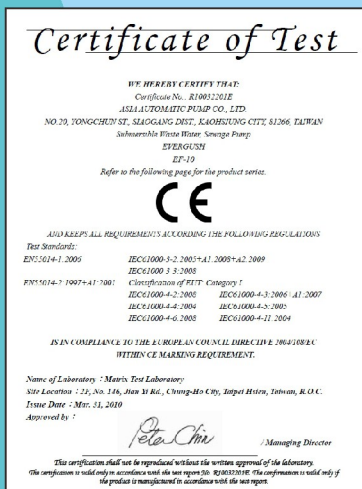
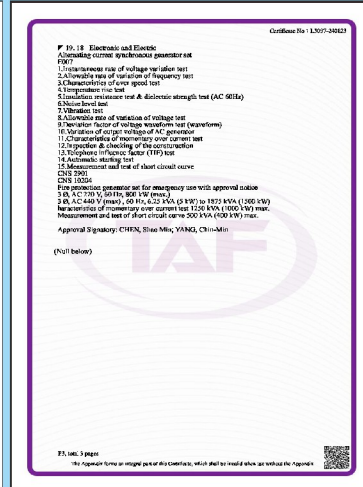
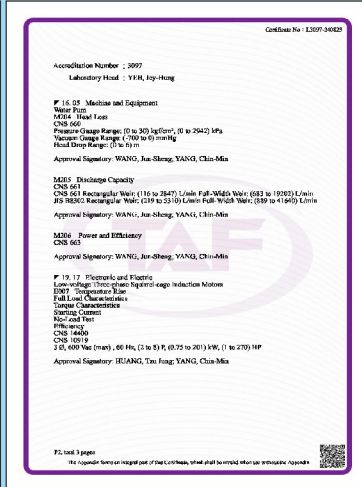
◎ TOSHMS Certificate

◎ CNS Certificate

◎ CFS Certificate

◎ CE Certificate

◎ TTQS Certificate





## EVERGUSH WATER PUMP/GENSET/MOTOR QC CENTER & TAF LABORATORY

Asia Automatic Pump Co.,Ltd(EVERGUSH PUMP/GENSET) is the first one and the only one Pump&Genset manufacturer that owns TAF(ILAC-MRA) Certificate for Pumps/Gensets/Electric Motors in Taiwan.

### EVERGUSH Water Pump TAF Laboratory and Quality Inspection Testing Center



### EVERGUSH Electric Motor TAF Laboratory and Quality Inspection Testing Center



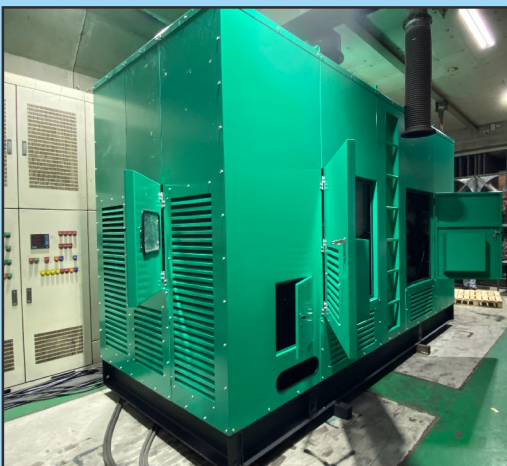


## EVERGUSH WATER PUMP/GENSET/MOTOR QC CENTER & TAF LABORATORY

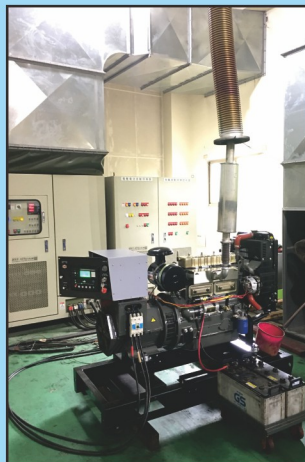
### EVERGUSH Diesel Genset TAF Laboratory and Quality Inspection Testing Center

In compliance with the Taiwan fire protection law, each diesel generator set has a TAF Laboratory test report. The current equipment test load capacity can reach up to 2,100KW(2,625KVA).

- Every generator set produced by EVERGUSH must be 100% tested and inspected in the laboratory. We use the most stringent inspection standards to check the diesel engine generator sets produced by us. Only after passing the inspection will we issue the TAF certificate. There is also EVERGUSH's after-sales service team, allowing users to use the product with peace of mind and without worries.
- Currently, there are 4 generator test rooms in the EVERGUSH Kaohsiung main plant, which can test up to 4 sets of diesel generators at the same time.



1000KW Diesel Genset Assembly



1500KW Diesel Genset Examination





## V-series Auto Booster Pump

Pressure Switch Control



Power: 1/4HP; 1/2HP; 1HP  
Voltage: 1PH110~240V  
Frequency: 50Hz, 60Hz  
Pole: 2P  
In/Out: 3/4", 1"  
Max. Head: 45M  
Max. Flow: 72L/min

Liquid: clean / tap / ground water  
Liquid Temp: 1~40°C  
Ambient Temp: Max. 40°C  
Suction Lift: Max. 6M  
Protection: IP54  
Insulation Class: E.B  
Pressure Set: On: 1~2bar; Off: 2~3.2bar



Automatically boost water pressure for houses, villas, apartments, factories, shops, laundries, etc.

## V-APH series Auto Booster Pump

Plastic Pump Casing  
No Rusty Water  
Pressure Switch Control



Power: 1/4HP; 1/2HP  
Voltage: 1PH110~240V  
Frequency: 50Hz, 60Hz  
Pole: 2P  
In/Out: 3/4", 1"  
Max. Head: 39M  
Max. Flow: 50L/min

Liquid: clean / tap / ground water  
Liquid Temp: 1~40°C  
Ambient Temp: Max. 40°C  
Suction Lift: Max. 6M  
Protection: IP54  
Insulation Class: E.B  
Pressure Set: On: 1~2bar; Off: 2~3.2bar



Automatically boost water pressure for houses, villas, apartments, factories, shops, laundries, etc.

## ET-series Electronic Auto Booster Pump

CPU Control / No Rusty Water  
Silence / Dry run shutdown



Power: 1/4HP; 1/2HP; 1HP  
Voltage: 1PH110~240V  
Frequency: 50Hz, 60Hz  
Pole: 2P  
In/Out: 3/4", 1"  
Max. Head: 30M  
Max. Flow: 88L/min

Liquid: clean / tap water  
Liquid Temp: 1~40°C  
Ambient Temp: Max. 40°C  
Suction Lift: Max. 4M  
Protection: IP54  
Insulation Class: E  
Pressure Set: On: 1~2bar; Off: 2.2~3bar



Automatically boost water pressure for houses, villas, apartments, factories, shops, laundries, etc.

## ETH-series Electronic Auto Booster Pump

Hot Water Type  
CPU Control / No Rusty Water  
Silence / Dry run shutdown



Power: 1/4HP; 1/2HP; 1HP  
Voltage: 1PH110~240V  
Frequency: 50Hz, 60Hz  
Pole: 2P  
In/Out: 3/4", 1"  
Max. Head: 30M  
Max. Flow: 88L/min

Liquid: clean / tap water  
Liquid Temp: 1~80°C  
Ambient Temp: Max. 40°C  
Suction Lift: Max. 4M  
Protection: IP54  
Insulation Class: E  
Pressure Set: On: 1~2bar; Off: 2.2~3bar



Automatically boost water pressure for solar heaters, houses, villas, apartments, shops, laundries, etc.

## ETF-series Flow Control Auto Booster Pump

Flow Control / No Rusty Water  
Silence / Dry run shutdown



The ETF pump must be installed below the water tank, positive pressure water source

Power: 1/4HP; 1/2HP  
Voltage: 1PH110~240V  
Frequency: 50Hz, 60Hz  
Pole: 2P  
In/Out: 3/4", 1"  
Max. Head: 29M  
Max. Flow: 65L/min

Liquid: clean / tap water  
Liquid Temp: 1~40°C  
Ambient Temp: Max. 40°C  
Inlet Pressure to start: Minimum 0.1bar  
Protection: IP54  
Insulation Class: E  
Off Pressure: 2.2~2.9 bar



Automatically boost water pressure for houses, villas, apartments, factories, shops, laundries, etc.

## ESV-series Electronic Auto Booster Pump

CPU Control / Cast Iron Pump  
Silence / Dry run shutdown



Power: 1/4HP; 1/2HP; 1HP  
Voltage: 1PH110~240V  
Frequency: 50Hz, 60Hz  
Pole: 2P  
In/Out: 3/4", 1"  
Max. Head: 33M  
Max. Flow: 95L/min

Liquid: clean / tap water  
Liquid Temp: 1~40°C  
Ambient Temp: Max. 40°C  
Suction Lift: Max. 4M  
Protection: IP54  
Insulation Class: B  
Pressure Set: On: 1.5~2.2bar; Off: 2.2~3.3bar



Automatically boost water pressure for houses, villas, apartments, factories, shops, laundries, etc.





## SP-series Direct Water Pump

Cast Iron Pump Casing  
With Thermal Protector



Power: 1/2HP; 1HP  
Voltage: 1PH110~240V  
Frequency: 50Hz, 60Hz  
Pole: 2P  
In/Out: 3/4", 1"  
Max. Head: 45M  
Max. Flow: 72L/min

Liquid: clean / tap / ground water  
Liquid Temp: 1~40°C  
Ambient Temp: Max. 40°C  
Suction Lift: Max. 6M  
Protection: IP54  
Insulation Class: E, B  
Working Pressure: Max. 6 bar



Water delivery to rooftop water storage tanks of villas, houses, apartments and buildings.



## EK-series Silent Water Pump

Cast Iron Pump Casing  
With Thermal Protector



Power: 1/2HP; 1HP  
Voltage: 1PH110~240V  
Frequency: 50Hz, 60Hz  
Pole: 2P  
In/Out: 3/4", 1"  
Max. Head: 43M  
Max. Flow: 90L/min

Liquid: clean / tap / ground water  
Liquid Temp: 1~40°C  
Ambient Temp: Max. 40°C  
Suction Lift: Max. 4M  
Protection: IP54  
Insulation Class: E, B  
Working Pressure: Max. 6 bar



Water delivery to rooftop water storage tanks of villas, houses, apartments and buildings.



## EKLBJ-series SUS Self-priming Jet Pump

Stainless Steel Pump Casing  
With Thermal Protector

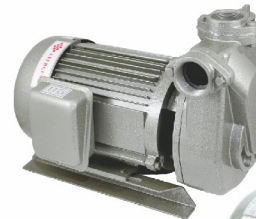


Power: 1/2HP; 1HP  
Voltage: 1PH110~240V  
Frequency: 50Hz, 60Hz  
Pole: 2P  
In/Out: 3/4", 1"  
Max. Head: 42M  
Max. Flow: 90L/min

Liquid: clean / tap / ground water  
Liquid Temp: 1~40°C  
Ambient Temp: Max. 40°C  
Suction Lift: Max. 9M  
Protection: IP54  
Insulation Class: F  
Working Pressure: Max. 6 bar

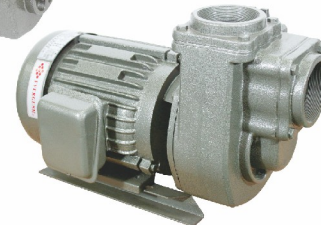


Water delivery to rooftop water storage tanks of houses. Water supply for RO equipment.



## SQD-series Self-priming Centrifugal Pump

Cast Iron Pump Casing  
Multi-stage Impellers



Power: 1/2HP~10HP  
Voltage: 1PH110~240V; 3PH220~660V  
Frequency: 50Hz, 60Hz  
Pole: 2P  
In/Out: 3/4"~3"  
Max. Head: 70M  
Max. Flow: 850L/min

Liquid: clean / tap / ground water  
Liquid Temp: 1~60°C  
Ambient Temp: Max. 40°C  
Suction Lift: Max. 9M  
Protection: IP54  
Insulation Class: E, B, F  
Working Pressure: Max. 10 bar



Water supply for agricultural Irrigation. Water delivery to rooftop water storage tanks of buildings.



## VS-series Inverter Constant Pressure Pump

VFD Control / No Rusty Water  
Constant Water Pressure  
Dry run shutdown



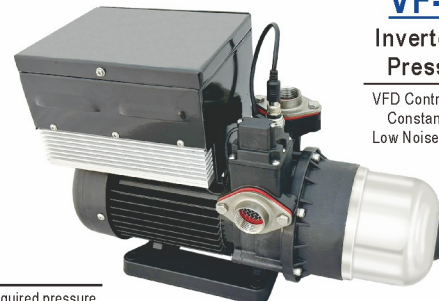
User can set required pressure  
value on the inverter and keeps  
water pressure constant.

Power: 0.5~5.5HP  
Voltage: 1PH110~240V; 3PH220~660V  
Frequency: 40~60Hz  
Pole: 2P  
In/Out: 3/4"~3"  
Max. Head: 78M  
Max. Flow: 32M<sup>3</sup>/hr

Liquid: clean / tap / drinking water  
Liquid Temp: 1~60°C  
Ambient Temp: Max. 40°C  
Pressure Set: 1~6.5 bar  
Protection: IP54  
Insulation Class: F  
Working Pressure: Max. 10 bar



Automatically boost water pressure for houses, apartments, factories, hotels, laundries, stadiums, etc.



## VF-series Inverter Constant Pressure Pump

VFD Control / No Rusty Water  
Constant Water Pressure  
Low Noise / Dry run shutdown

User can set required pressure  
value on the inverter and keeps  
water pressure constant.

Power: 1/2HP; 1HP  
Voltage: 1PH110~240V  
Cycle: 40~60Hz  
Pole: 2P  
In/Out: 3/4", 1"  
Max. Head: 30M  
Max. Flow: 88L/min

Liquid: clean / tap / drinking water  
Liquid Temp: 1~40°C  
Ambient Temp: Max. 40°C  
Pressure Set: 1~2.8bar  
Protection: IP54  
Insulation Class: E  
Working Pressure: Max. 10bar



Automatically boost water pressure for houses, villas, apartments, factories, shops, laundries, etc.



## ECM-series

### SUS Multi-stage Centrifugal Pump

Stainless Steel Pump  
Horizontal Type



Power: 0.5~5.5HP  
Voltage: 1PH110~240V, 3PH220~660V  
Frequency: 50Hz, 60Hz  
Pole: 2P  
Inlet / Outlet: 1"~2"  
Max. Head: 78M  
Max. Flow: 32M<sup>3</sup>/hr

Liquid: clean / tap / drinking water  
Liquid Temp: -15~70°C  
Ambient Temp: Max. 40°C  
Suction Lift: Max. 4M  
Protection: IP54, IP55  
Insulation Class: F  
Working Pressure: Max. 10bar



Water supply for factories, industrial equipment, water treatment, pressure boosting systems, etc.

## FK/FKS-series

### Self-priming Centrifugal Pump

FK: Cast Iron Pump  
FKS: Stainless Steel Pump



Power: 1~15HP  
Voltage: 1PH110~240V, 3PH220~660V  
Frequency: 50Hz, 60Hz  
Pole: 2P  
Inlet / Outlet: 1.5"~4"  
Max. Head: 31M  
Max. Flow: 1550L/min

Liquid: Ground / Waste water  
Liquid Temp: 0~60°C  
Ambient Temp: Max. 40°C  
Suction Lift: Max. 5M  
Protection / Insulation: IP54 / B, F class  
Working Pressure: Max. 10bar  
Solid Passage: Max. 5mm

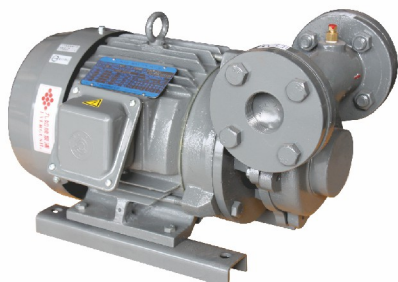


Agriculture irrigation, Water supply for industrial equipment, wastewater drainage in construction site.

## HDP-series

### High Pressure Boiler Feed Pump

Cast Iron Pump  
As Fire Jockey Pump



Power: 1~20HP  
Voltage: 1PH110~240V, 3PH220~660V  
Frequency: 50Hz, 60Hz  
Pole: 2P  
Inlet / Outlet: 1"~2"  
Max. Head: 230M  
Max. Flow: 220L/min

Liquid: clean / ground water  
Liquid Temp: 0~60°C  
Ambient Temp: Max. 40°C  
Suction Lift: Max. 6M  
Protection: IP54  
Insulation Class: E, B, F  
Working Pressure: Max. 10bar

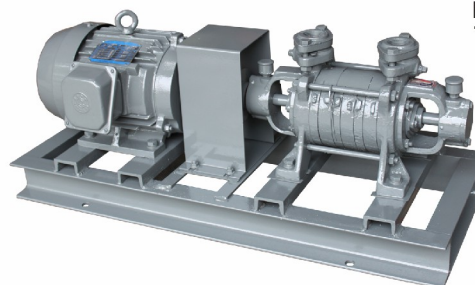


Water supply for boilers, factories, high pressure washing facilities. As a Fire Jockey Pump.

## WZ-series

### Horizontal Multi-stage Pump

Cast Iron Pump  
As Fire Jockey Pump



Power: 3~40HP  
Voltage: 3PH220~660V  
Frequency: 50Hz, 60Hz  
Pole: 4P  
Inlet / Outlet: 1"~2"  
Max. Head: 250M  
Max. Flow: 380L/min

Liquid: clean / ground water  
Liquid Temp: 0~80°C  
Ambient Temp: Max. 40°C  
Suction Lift: Max. 6M  
Protection: IP54  
Insulation Class: E, B, F  
Working Pressure: Max. 10bar



Water supply for boilers, factories, high pressure washing facilities. As a Fire Jockey Pump.

## IL-series

### In-Line Centrifugal Pump

Horizontal or Vertical installation



Power: 0.5~40HP  
Voltage: 1PH110~240V, 3PH220~660V  
Frequency: 50Hz, 60Hz  
Pole: 2P, 4P  
Inlet / Outlet: 1"~8"  
Max. Head: 85M  
Max. Flow: 5400L/min

Liquid: clean/tap/ground water  
Liquid Temp: 0~60°C  
Ambient Temp: Max. 40°C  
Suction Lift: Max. 4M  
Protection: IP54, IP55  
Insulation Class: E, B, F  
Working Pressure: Max. 10bar



Water Circulation for air conditioning systems, chillers, cooling towers, booster systems, etc.

## ELS/ELW-series

### Plastic Centrifugal Pump

ELS: For Sea Water  
ELW: For Hot Spa



Power: 0.5~3HP  
Voltage: 1PH110~240V, 3PH220~660V  
Frequency: 50Hz, 60Hz  
Pole: 2P  
Inlet / Outlet: 1"~2"  
Max. Head: 25M  
Max. Flow: 600L/min

Liquid: sea/ground/hot spring water  
Liquid Temp: 0~80°C  
Ambient Temp: Max. 40°C  
Suction Lift: Max. 3M  
Protection: IP54  
Insulation Class: E, B, F  
Working Pressure: Max. 6bar

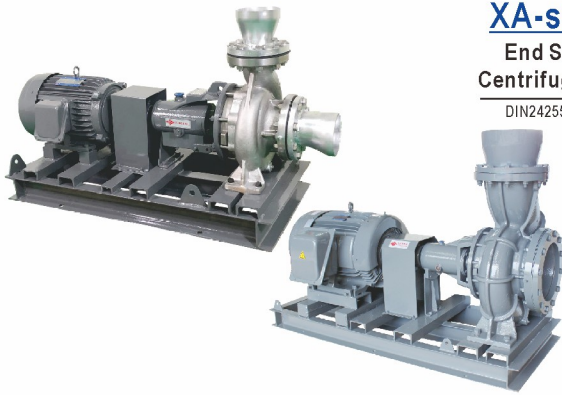


Water supply for Aquaculture farms, sea water circulation systems, hot spring systems, etc.



## XA-series End Suction Centrifugal Pump

DIN24255 Standard



Power: 1~300HP  
Voltage: 3PH220~660V  
Frequency: 50Hz, 60Hz  
Pole: 2P, 4P  
Inlet / Outlet: 1.5"~12"  
Max. Head: 110M  
Max. Flow: 1200M<sup>3</sup>/hr

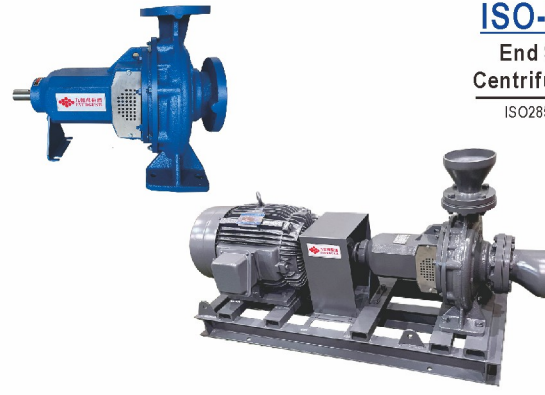
Liquid: clean/tap/ground water  
Liquid Temp: 0~100°C  
Ambient Temp: Max. 40°C  
Suction Lift: Max. 4M  
Protection: IP54, IP55  
Insulation Class: E, B, F  
Working Pressure: Max. 10bar



Water Circulation for chillers and cooling towers. Water supply for industries, factories, buildings, etc.

## ISO-series End Suction Centrifugal Pump

ISO2858 Standard



Power: 1~300HP  
Voltage: 3PH220~660V  
Frequency: 50Hz, 60Hz  
Pole: 2P, 4P  
Inlet / Outlet: 1.5"~10"  
Max. Head: 230M  
Max. Flow: 900M<sup>3</sup>/hr

Liquid: clean/tap/ground water  
Liquid Temp: 0~105°C  
Ambient Temp: Max. 40°C  
Suction Lift: Max. 4M  
Protection: IP54, IP55  
Insulation Class: E, B, F class  
Working Pressure: Max. 16~24bar



Water Circulation for chillers and cooling towers. Water supply for industries, factories, buildings, etc.

## ECDL-series Vertical Multi-stage Pump

Stainless Steel Pump  
Space saving



Power: 1~150HP  
Voltage: 1PH110~240V, 3PH220~660V  
Frequency: 50Hz, 60Hz  
Pole: 2P  
Inlet / Outlet: 1"~4"  
Max. Head: 270M  
Max. Flow: 140M<sup>3</sup>/hr

Liquid: clean/tap/drinking water  
Liquid Temp: -15~105°C  
Ambient Temp: Max. 40°C  
Motor Efficiency: IE2, IE3  
Protection: IP55  
Insulation Class: F  
Working Pressure: Max. 25 bar



Deliver water to the rooftop cisterns on high-rise buildings. Water supply for industries, factories, etc.

## CP/CPS-series Close-coupled Centrifugal Pump

CP: Cast Iron Pump  
CPS: SUS304/316 Pump



Power: 0.5~150HP  
Voltage: 1PH110~240V, 3PH220~660V  
Frequency: 50Hz, 60Hz  
Pole: 2P, 4P  
Inlet / Outlet: 1"~10"  
Max. Head: 80M  
Max. Flow: 960M<sup>3</sup>/hr

Liquid: clean/ground/cooling water  
Liquid Temp: 0~80°C  
Ambient Temp: Max. 40°C  
Suction Lift: Max. 4M  
Protection: IP54, IP55  
Insulation Class: E, B, F  
Working Pressure: Max. 10bar



Water Circulation for chillers and cooling towers. Water supply for industries, factories, buildings, etc.

## FF-series Fire-fighting Pump



Power: 7.5~350HP  
Voltage: 3PH220~660V  
Frequency: 50Hz, 60Hz  
Pole: 2P, 4P  
Inlet / Outlet: 2.5"~12"  
Rated Head: 30~160M  
Rated Flow: 9~570M<sup>3</sup>/hr

Liquid: clean/tap/ground water  
Liquid Temp: 0~70°C  
Ambient Temp: Max. 40°C  
Suction Lift: Max. 4M  
Protection: IP54, IP55  
Insulation Class: B, F  
Working Pressure: Max. 10~20 bar



Automatically boost water pressure to fire hydrants, fire sprinklers, fire foam systems in buildings.

## EG-series Diesel Engine Generator Set



Output: 30~1500KW  
Voltage: 3PH220~660V  
Frequency: 60Hz  
Pole / Speed: 4P / 1800rpm  
Starting Voltage: 12V, 24V  
Number of cylinders: L-4, L-6, V-8, V-10  
Cooling Way: Water-cooled

Ambient Temp: Max. 40°C  
Engine selection: KORMAN, DOOSAN, FPT, PERKINS, CUMMINS, BAUDOUIN, CHINA BRAND  
Std Equipment: Diesel engine, generator, control box, steel chassis, battery, industrial muffler, shock-proof hose and pad, daily fuel tank, engine import certificate  
Special Options: ATS, smoke purifier, soundproof cover, etc.



Emergency temporary power supply for buildings, factories, malls, hotels and fire protection equipment.



**Customized Design**

**MC-series**
**Auto Booster Pump System**

Single Pump Operation  
Pressure Switch Control

Power: 0.5~60HP  
Voltage: 1PH110~240V, 3PH220~660V  
Frequency: 50Hz, 60Hz  
Pole: 2P, 4P  
Inlet / Outlet: 1"~6"  
Pressure Set: 6~500M<sup>3</sup>/hr  
Rated Flow: On: 1~8 bar; Off: 2~9 bar

Liquid: clean / tap / ground water  
Liquid Temp: 0~90°C  
Ambient Temp: Max. 40°C  
Suction Lift: Max. 4~9M  
Protection: IP54, IP55  
Insulation Class: E, B, F  
Working Pressure: Max. 10~20bar


**Customized Design**

**PC-series**
**Auto Booster Pump System**

Dual Pumps Alternating  
and Parallel Operation  
Pressure Switch Control

Power: 0.5~60HP  
Voltage: 1PH110~240V, 3PH220~660V  
Frequency: 50Hz, 60Hz  
Pole: 2P, 4P  
In/Out Manifold: 1"~10"  
Pressure Set: On: 1~8 bar; Off: 2~9 bar  
Rated Flow: 6~1000M<sup>3</sup>/hr

Liquid: clean / tap / ground water  
Liquid Temp: 0~90°C  
Ambient Temp: Max. 40°C  
Suction Lift: Max. 4~9M  
Protection: IP54, IP55  
Insulation Class: E, B, F  
Working Pressure: Max. 10~20bar



Automatic water pressure boosting for car washes, factories, construction sites, buildings, markets, military camps, parks, public restrooms, gardening, stadiums, malls, irrigation sprinkler systems of farms, etc.


**Customized Design**
**US-series**
**Inverter Booster Pump System**

Single Pump Operation  
VFD Control / Energy saving  
Constant Water Pressure



Power: 0.5~60HP  
Voltage: 1PH110~240V, 3PH220~660V  
Frequency: 50Hz, 60Hz  
Pole: 2P, 4P  
Inlet / Outlet: 1"~6"  
Pressure Set: 1~9 bar  
Rated Flow: 6~500M<sup>3</sup>/hr

Liquid: clean / tap / ground water  
Liquid Temp: 0~90°C  
Ambient Temp: Max. 40°C  
Suction Lift: Max. 4~9M  
Protection: IP54, IP55  
Insulation Class: E, B, F  
Working Pressure: Max. 10~20bar


**Customized Design**
**UN-series**
**Inverter Booster Pump System**

Dual Pumps Alternating  
and Parallel Operation  
VFD Control / Energy saving  
Constant Water Pressure



Power: 0.5~5.5HP  
Voltage: 1PH110~240V, 3PH220~660V  
Frequency: 50Hz, 60Hz  
Pole: 2P, 4P  
In/Out Manifold: 1"~4"  
Pressure Set: 1~6 bar  
Rated Flow: 6~84M<sup>3</sup>/hr

Liquid: clean / tap / ground water  
Liquid Temp: 0~90°C  
Ambient Temp: Max. 40°C  
Suction Lift: Max. 4~9M  
Protection: IP54, IP55  
Insulation Class: E, B, F  
Working Pressure: Max. 10bar



Automatic water pressure boosting for hotels, stadiums, factories, construction sites, buildings, malls, military camps, parks, public restrooms, stadiums, restaurants, irrigation sprinkler systems of farms, etc.


**Customized Design**
**UP-series**
**Inverter Booster Pump System**

Dual Pumps Alternating  
and Parallel Operation  
VFD Control / Energy saving  
Constant Water Pressure

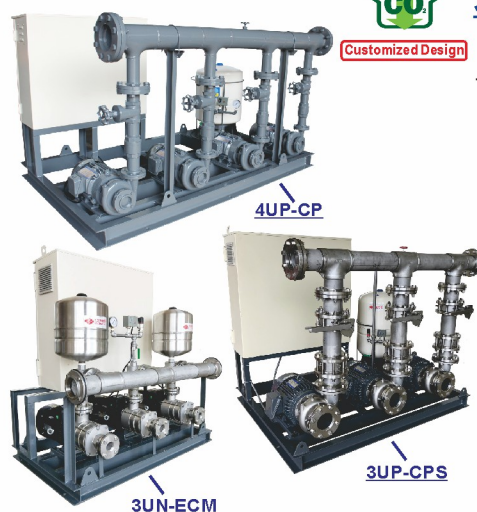


Power: 0.5~60HP  
Voltage: 1PH110~240V, 3PH220~660V  
Frequency: 50Hz, 60Hz  
Pole: 2P, 4P  
Inlet / Outlet: 1"~10"  
Pressure Set: 1~9 bar  
Rated Flow: 6~1000M<sup>3</sup>/hr

Liquid: clean / tap / ground water  
Liquid Temp: 0~90°C  
Ambient Temp: Max. 40°C  
Suction Lift: Max. 4~9M  
Protection: IP54, IP55  
Insulation Class: E, B, F  
Working Pressure: Max. 10~20bar


**Customized Design**
**3UN/3UP/4UP**
**Inverter Booster Pump System**

Multiple Pumps Alternating  
and Parallel Operation  
VFD Control / Energy saving  
Constant Water Pressure



Automatic water pressure boosting for hotels, stadiums, factories, construction sites, buildings, malls, military camps, parks, public restrooms, stadiums, restaurants, irrigation sprinkler systems of farms, etc.



## EF-series

### Submersible Sewage Pump

Built-in Overload Protector  
Non-clog Vortex Impeller  
Guide Rail Device is optional



Power: 0.5~15HP  
Voltage: 1PH110~240V;3PH220~660V  
Frequency: 50Hz,60Hz  
Pole: 2P  
Discharge: 2"~4"  
Max. Head: 38M  
Max. Flow: 2500L/min

Liquid: wastewater, sewage  
Liquid Temp: 0~40°C  
Ambient Temp: Max.40°C  
Solid Passage: Max.35~50mm  
Protection: IP68  
Insulation Class: F  
0.5~2HP 1phase can be equipped with float switch



## EAF-series

### Heavy Duty Sub. Sewage Pump

Fully Cast Iron Pump  
SIC Mechanical Seal  
Guide Rail Device is optional



Power: 1~20HP  
Voltage: 1PH110~240V;3PH220~660V  
Frequency: 50Hz,60Hz  
Pole: 2P,4P  
Discharge: 2"~4"  
Max. Head: 40M  
Max. Flow: 6950L/min

Liquid: wastewater, sewage  
Liquid Temp: 0~40°C  
Ambient Temp: Max.40°C  
Solid Passage: Max.35~80mm  
Protection: IP68  
Insulation Class: F  
0.5~2HP 1phase can be equipped with float switch



Drainage waste water from industries, factories, buildings, waste water treatment systems, community markets, fisheries, animal husbandry, dairy farms, piggery, fecal sewage tanks,etc.

## EA-series

### Submersible Sump Pump

Built-in Overload Protector  
Semi-open Impeller  
Guide Rail Device is optional



Power: 0.5~15HP  
Voltage: 1PH110~240V;3PH220~660V  
Frequency: 50Hz,60Hz  
Pole: 2P  
Discharge: 2"~4"  
Max. Head: 44M  
Max. Flow: 1800L/min

Liquid: wastewater, rainwater  
Liquid Temp: 0~40°C  
Ambient Temp: Max.40°C  
Solid Passage: Max.6mm  
Protection: IP68  
Insulation Class: F  
0.5~2HP 1phase can be equipped with float switch



## EFK-series

### Submersible Cutter Pump

Built-in Overload Protector  
Non-clog Impeller with  
Tungsten Cutter Edge  
Guide Rail Device is optional



Power: 0.5~15HP  
Voltage: 1PH110~240V;3PH220~660V  
Frequency: 50Hz,60Hz  
Pole: 2P  
Discharge: 2"~4"  
Max. Head: 36M  
Max. Flow: 2700L/min

Liquid: wastewater, sewage  
Liquid Temp: 0~40°C  
Ambient Temp: Max.40°C  
Solid Passage: Max.22~40mm  
Protection: IP68  
Insulation Class: F  
0.5~2HP 1phase can be equipped with float switch



Wastewater drainage from farms, ditches, pits, ponds, factories, tunnels, basements of buildings,etc.

Discharge wastewater containing kitchen waste, food, excrement, tampons, branches, leaves, etc.

## EFS-series

### SUS316 Sub. Sewage Pump

Built-in Overload Protector  
SUS316 Non-clog Impeller  
SIC Mechanical Seal  
Guide Rail Device is optional



Power: 0.5~15HP  
Voltage: 1PH110~240V;3PH220~660V  
Frequency: 50Hz,60Hz  
Pole: 2P  
Discharge: 2"~4"  
Max. Head: 35M  
Max. Flow: 2500L/min

Liquid: wastewater, sewage  
Liquid Temp: 0~40°C  
Ambient Temp: Max.40°C  
Solid Passage: Max.35~50mm  
Protection: IP68  
Insulation Class: F  
0.5~2HP 1phase can be equipped with float switch



## EFD-series

### Submersible Dredge Pump

Built-in Overload Protector  
Non-clog Impeller with SUS316 Agitator  
SIC Mechanical Seal  
Guide Rail Device is optional



Power: 0.5~7.5HP  
Voltage: 1PH110~240V;3PH220~660V  
Frequency: 50Hz,60Hz  
Pole: 2P  
Discharge: 2"~4"  
Max. Head: 28M  
Max. Flow: 1300L/min

Liquid: wastewater, sewage, slurry water  
Liquid Temp: 0~40°C  
Ambient Temp: Max.40°C  
Solid Passage: Max.35~50mm  
Protection: IP68  
Insulation Class: F  
0.5~2HP 1phase can be equipped with float switch



Wastewater drainage from chemical plants, dyeing textile factories, animal husbandry, etc.

Dredging slurry water from construction sites. Drainage wastewater from animal farms,etc.



## EFJ-series

### Portable Sub. Dredge Pump

Built-in Overload Protector  
TPU Non-clog Impeller with agitator  
SIC Mechanical Seal



Power: 0.5~1HP  
Voltage: 1PH110~240V;3PH220~660V  
Frequency: 50Hz,60Hz  
Pole: 2P  
Discharge: 2"~3"  
Max. Head: 18.5M  
Max. Flow: 380L/min

Liquid: wastewater, slurry water  
Liquid Temp: 0~40°C  
Ambient Temp: Max.40°C  
Solid Passage: Max.6 mm  
Protection:IP68  
Insulation Class: F  
0.5~1HP 1phase can be equipped with float switch



Sump pit and rain water drainage. For tunnel engineering, household, construction site, factory.

## EAH-series

### High Head Sub. Sump Pump

Built-in Overload Protector  
Close-type Bronze Impeller



Power: 1~7.5HP  
Voltage: 1PH110~240V;3PH220~660V  
Frequency: 50Hz,60Hz  
Pole: 2P  
Discharge: 1"~3"  
Max. Head: 42M  
Max. Flow: 950L/min

Liquid: wastewater, ground water  
Liquid Temp: 0~40°C  
Ambient Temp: Max.40°C  
Solid Passage: Max.3.5~5.5mm  
Protection: IP68  
Insulation Class: F  
1~2HP 1phase can be equipped with float switch



Ground water transfer to farm and irrigation. Agriculture and husbandry wastewater drainage.

## EFJ-series

### Sub. Ejector Pump (Sub. Aerator)

Built-in Overload Protector  
SIC Mechanical Seal  
Guide Rail Device is optional



Power: 0.5~7.5HP  
Voltage: 1PH110~240V;3PH220~660V  
Frequency: 50Hz,60Hz  
Pole: 2P  
Disch./Air Pipe: 3" / 1.5"~2"  
Rated Air Volume: 5~120 M<sup>3</sup>/Hr  
Rated OTR: 0.12~5.2 KgO<sub>2</sub>/Hr

Liquid: wastewater, freshwater  
Liquid Temp: 0~40°C  
Ambient Temp: Max.40°C  
Solid Passage: Max.35~50mm  
Protection: IP68  
Insulation Class: F  
Rated Depth(HR): 1.5~4M



Oxygen aeration of wastewater for wastewater treatment. Oxygenated for aquaculture, such as fishing farming, shrimp farming or hydroponics applications.

## EAFJ-series

### Heavy-duty Sub. Ejector Pump (Sub. Aerator)

Built-in Overload Protector  
SIC Mechanical Seal  
Guide Rail Device is optional



Power: 2~7.5HP  
Voltage: 1PH110~240V;3PH220~660V  
Frequency: 50Hz,60Hz  
Pole: 2P  
Disch./Air Pipe: 3" / 1.5"~2"  
Rated Air Volume: 22~120 M<sup>3</sup>/Hr  
Rated OTR: 0.9~5.2 KgO<sub>2</sub>/Hr

Liquid: wastewater, freshwater  
Liquid Temp: 0~40°C  
Ambient Temp: Max.40°C  
Solid Passage: Max.35~50mm  
Protection: IP68  
Insulation Class: F  
Rated Depth(HR): 2.5~4M



## EFG-series

### Submersible Grinder Pump

Built-in Overload Protector  
Grinder Impeller



Power: 2~5HP  
Voltage: 1PH110~240V;3PH220~660V  
Frequency: 50Hz,60Hz  
Pole: 2P  
Inlet / Outlet: 1-1/4"~2"  
Max. Head: 32M  
Max. Flow: 400L/min

Liquid: wastewater, sewage  
Liquid Temp: 0~40°C  
Ambient Temp: Max.40°C  
Solid Passage: Max.50mm  
Protection: IP68  
Insulation Class: F  
2HP 1phase can be equipped with float switch



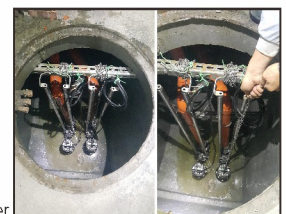
Wastewater drainage from toilets, bathtubs, washing machines, laundries and other industries.

## TOS-series

### Submersible Pump with Guide Rail Device



Through simple and convenient installation, we can connect the pump onto guide rail device. Whenever the pump needs maintenance, it can be easily pulled out through guide bar to dismantle, repair or examine the pump. Because wastewater pits or septic tanks could contain deadly biogas and the environment is always extremely harsh. For life safety purpose, The workers no longer take big risks to go down the septic tank to do maintenance or replacement. It's safer and more convenient to do maintenance for the pump.





## EXL-series

### Submersible Axial-flow Pump

Large Water Flow  
EXL: 5M or less  
EXLS: Above 5M



Power: 5~20HP  
Voltage: 3PH220~660V  
Frequency: 50Hz, 60Hz  
Pole: 4P  
Discharge: 6"~12"  
Max. Head: 28M  
Max. Flow: 11000L/min

Liquid: fresh/ground/sea water, wastewater  
Liquid Temp: 0~40°C  
Ambient Temp: Max. 40°C  
Solid Passage: Max. 40mm  
Protection: IP68  
Insulation Class: F  
Anode plates installed as required for seawater applications



Aquaculture and agriculture water pumping and drainage for large water flow applications. Flood control.

## EXH-series

### Submersible Dewatering Pump

Amphibious pump



Power: 2~5HP  
Voltage: 3PH220~660V  
Frequency: 50Hz, 60Hz  
Pole: 4P  
Discharge: 2"~5"  
Max. Head: 15M  
Max. Flow: 2000L/min

Liquid: fresh/ground/sea water, wastewater  
Liquid Temp: 0~40°C  
Ambient Temp: Max. 40°C  
Solid Passage: Max. 10mm  
Protection: IP68  
Insulation Class: F  
Anode plates installed as required for seawater applications



Water extracting from lakes, reservoirs, fishy ponds. Aquaculture water pumping and drainage

## STU-series

### Stainless Steel Sub. Transfer Pump

Installed in the basement cistern of the building



Power: 1~50HP  
Voltage: 1PH110~240V, 3PH220~660V  
Frequency: 60Hz  
Pole: 2P  
Discharge: 1.5"~4"  
Max. Head: 246M  
Max. Flow: 1500L/min

Liquid: clean / tap / fresh water  
Liquid Temp: 0~40°C  
Ambient Temp: Max. 40°C  
Working Pressure: Max. 25 bar  
Protection: IP68  
Insulation Class: B, F  
Starting Method: 1~10HP Direct / 15~50HP Y-Delta



Transfer water from basement cisterns to rooftop reservoirs on high-rise buildings or apartments.

## ST/BS/BC-series

### Stainless Steel Sub. Deep Well Pump

ST: For 4" Well  
BS/BC: For 6"~12" Well



Power: 0.5~120HP  
Voltage: 1PH110~240V, 3PH220~660V  
Frequency: 50Hz, 60Hz  
Pole: 2P  
Inlet / Outlet: 1.5"~6"  
Max. Head: 460M  
Max. Flow: 5000L/min

Liquid: clean/fresh/ground water  
Liquid Temp: 0~40°C  
Ambient Temp: Max. 40°C  
Suitable Well: 4"~12"  
Protection: IP68  
Insulation Class: F  
Franklin motor or custom spa water motor is optional



Delivering ground water from deep wells, rivers, hot springs, lakes, etc. For Agriculture irrigation.

## EFM-series

### Submersible Mixer

Built-in Overload Protector  
SIC Mechanical Seal  
EFM: Cast Iron  
EFMS: Stainless Steel SUS316



Power: 0.5~3HP  
Voltage: 1PH110~240V, 3PH220~660V  
Frequency: 50Hz, 60Hz  
Pole: 4P  
Rated Capacity: 108~408M<sup>3</sup>/Hr  
Rated Flow Speed: 1.78~3.50M/s  
24 Hours continuous operation is allowed

Liquid: wastewater, sewage  
Liquid Temp: 0~40°C  
Ambient Temp: Max. 40°C  
Solid Passage: Max. 35~50mm  
Protection: IP68  
Insulation Class: F  
Guide rail device is optional upon request



To mix and agitate impurities or excrement in the wastewater treatment of any industries.

## ETS-series

### Stainless Steel In-line Pump

The wetted parts are free of rust  
Vertical or Horizontal installation ways are acceptable



Power: 1~50HP  
Voltage: 1PH110~240V, 3PH220~660V  
Frequency: 50Hz, 60Hz  
Pole: 2P  
Inlet / Outlet: 1.5"~4"  
Max. Head: 210M  
Max. Flow: 1120L/min

Liquid: clean / tap / fresh water  
Liquid Temp: 0~40°C  
Ambient Temp: Max. 40°C  
Working Pressure: Max. 20bar  
Protection: IP68  
Insulation Class: F  
Customized design upon customer's requests



Transfer water from basement cisterns to rooftop reservoirs on high-rise buildings or apartments.



## HFEH-series

**Electric Motor**  
(HIGH EFFICIENCY IE3)



HFEV:Vertical Type



HFEH:Horizontal Type

Power: 1~75HP  
Voltage: 3PH220~660V  
Frequency: 50Hz,60Hz  
Pole: 2P,4P  
Protection: IP54,IP55  
Insulation: F class  
Safety Factor: 1.0 ; 1.15

Ambient Temp.: Max.40°C  
Motor Type: HFEH:Horizontal / HFEV:Vertical  
International Standards: IEC  
National Standards: CNS14400  
Protection type: Enclosed Fan-cooled  
Efficiency Level: IE3 High Efficiency  
Full load Eff.: 83~95.4%



Suitable for assembling with EVERGUSH all kinds of centrifugal pumps, used in water delivering.

## EPT-series

**Pressure Tank**  
(Diaphragm type)



Horizontal Type



Vertical Type



Volume: 2~300L  
Type: Membrane  
Shell Material: Standard-Iron  
Custom-Stainless Steel  
Liquid Temp.: Max.93°C  
Working Pressure: EPT: Max.10 bar  
EPTM: Max.16 bar

Liquid: Clean / Fresh / Tap water  
Pre-charge Pressure: EPT: 2bar ; EPTM:4bar



(Custom-Blue)



(Custom-SUS304)



With water pump, control panel, piping, valves, etc. All incorporated in one booster pump system.

## P-FF series

**Control Panel**  
for Fire Pump



Power: 7.5~350HP  
Voltage: 3PH220~660V  
Protection: IP54,IP55  
Type: Indoor/outdoor single-layer door  
Outdoor double door with window  
Outer Box Material :  
Iron Steel Plate-Standard  
SUS304-Customized

Ambient Temp.:Max.40°C  
OP. Method:Simplex, duplex alternating or  
duplex parallel operation  
Standards: Chinese National Standard(CNS)  
CNS8917,CNS8918,CNS8919  
Install additional equipment such as leakage  
circuit breaker, soft starter, inverter,as required.



For fire fighting pumps, boosting pumps, fire foam pumps, fire sprinkler pumps plus jockey pumps.

## P-series

**Control Panel for**  
Water Pump



Power: 1~100HP  
Voltage: 1PH110~240V;3PH220~660V  
Protection: IP54,IP55  
Type: Indoor/outdoor single-layer door  
Outdoor double door with window  
Outer Box Material :  
Iron Steel Plate-Standard  
SUS304-Customized

Ambient Temp.: Max.40°C  
OP. Method: Simplex, duplex alternating or  
duplex parallel operation  
Equipped with electric rods, float switches or  
liquid level controllers according to customer  
needs. Install additional equipment such as  
leakage circuit breaker, soft starter, inverter, PLC,  
etc. as required.



For centrifugal pumps, water transfer pumps, wastewater pumps, dewatering pumps, well pumps, etc.

## P-MC/PC

**Control Panel for**  
Automatic Booster  
Pump System



Power: 1~100HP  
Voltage: 1PH110~240V;3PH220~660V  
Protection: IP54,IP55  
Type: Indoor/outdoor single-layer door  
Outdoor double door with window  
Outer Box Material :  
Iron Steel Plate-Standard  
SUS304-Customized

Ambient Temp.:Max.40°C  
OP. Method: Simplex, duplex alternating or  
duplex parallel operation  
Equipped with electric rods, float switches or  
liquid level controllers according to customer  
needs. Install additional equipment such as  
leakage circuit breaker, soft starter, inverter, PLC,  
etc. as required.



For Automatic Booster Pump Systems. MC: Simplex operation, PC: Duplex operation.

## P-U series

**Control Panel for**  
Inverter Booster  
Pump System



Power: 1~100HP  
Voltage: 1PH110~240V;3PH220~660V  
Protection: IP54,IP55  
Type: Indoor/outdoor single-layer door  
Outdoor double door with window  
Outer Box Material :  
Iron Steel Plate-Standard  
SUS304-Customized

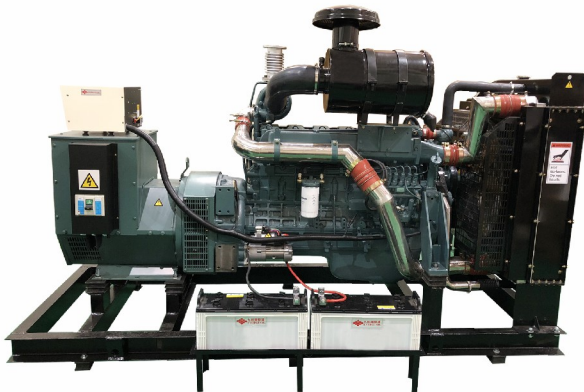
Ambient Temp.: Max.40°C  
OP. Method: Simplex, duplex, triplex, quadruplex  
alternating and parallel operation  
Equipped with electric rods, float switches or  
liquid level controllers according to customer  
needs. Install additional equipment such as  
leakage circuit breaker, PID, PLC, Human  
Interface, etc. as required.



For Inverter Booster Pump Systems. US: Simplex operation, UP: Multiple pump operation.



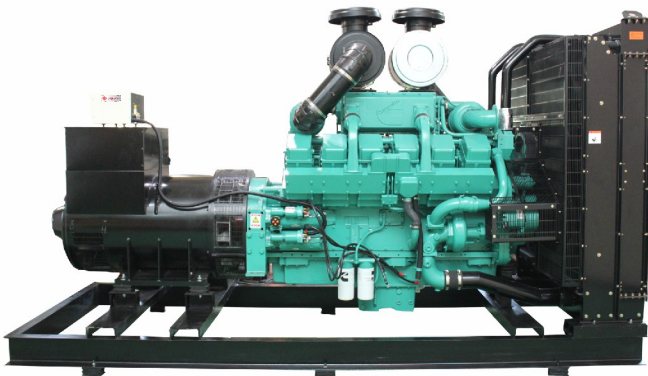
EVERGUSH Diesel Gensets - a wide range of specifications, 30~1500KW, various brands of engine options



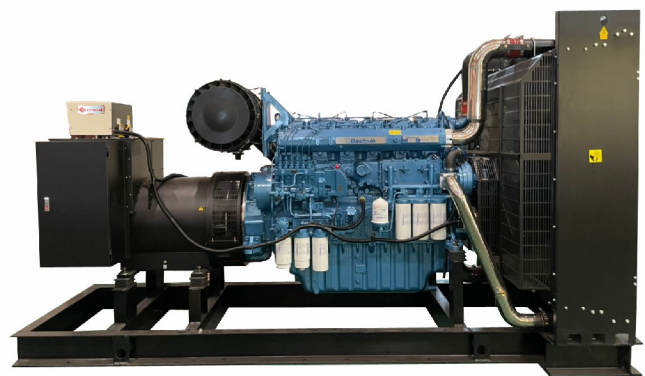
EVERGUSH Diesel Genset(KORMAN Engine Driven)



EVERGUSH Diesel Genset(FPT Engine Driven)



EVERGUSH Diesel Genset(CUMMINS Engine Driven)



EVERGUSH Diesel Genset(BAUDOUIN Engine Driven)



1500KW Genset set up on site



EVERGUSH 1500KW Genset was tested and inspected in the laboratory.



1500KW Generator set was assembled in the EVERGUSH main factory in Kaohsiung, Taiwan.



EVERGUSH Diesel Genset (Sound Proof Type)



EVERGUSH Diesel Genset(Sound Proof Type)+Disaster prevention smart microgrid system



This system is mainly installed in places with insufficient electricity, such as mountainous areas, remote tribes, and outlying islands. If a natural disaster occurs suddenly, resulting in power outage. The smart microgrid system, which normally has power storage function, will immediately come into play to provide emergency power to shelters.