



Features

- Non-clogging Vortex impeller minimizes abrasives wear and allows large solid passage.
- Dry motor with overload protector; Cable with an epoxy resin sealed water-proof cable hood; Use deep groove C3 bearing to extend life time.
- Superior abrasion resistant double mechanical seal to ensure best seal effect.
- Oil seal mounted outside of seal chamber stops solids gathering around seal faces.

Motor Spec.

- 2P dry or oil type motor.
- Insulation: F class.
- Protection: IP68.
- Frequency: 50Hz
- Voltage: 1 ϕ 220~240V(0.5~2HP)
3 ϕ 220~660V(all models)



Applications

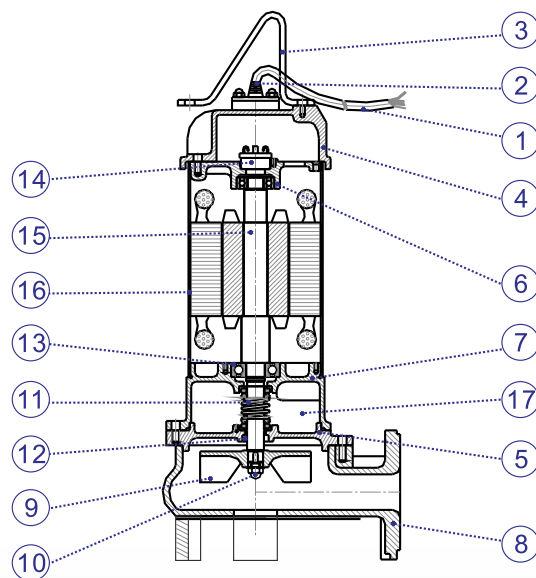
- Waste water drainage from all industries.
- Sewage drainage from hotels, restaurants, schools, malls, and public facilities.
- Fishery, animal husbandry, stock farm, piggery, fecal sewage tank in waste water treatment plant.
- Drainage of waste water containing fibrous additives from leather factory, dyeing factory and food processing factory.



Parts and Materials List

No.	Parts	Std. Material
		EF Model
1	Cable	UL_STOW or VCT
2	Cable hood	PVC
3	Handle	Nylon6 or SS400
4	Motor cover	Nylon66 or FC200
5	Seal housing	FC200
6	Bracket	FC200
7	Oil chamber	FC200
8	Pump casing	FC200
9	Impeller	FC200
10	Nut	SUS304
11	Mech. seal	CA/CE
12	Oil seal	NBR
13	Bearing	(NTN brand)
14	Overload protector	(T.I.brand)
15	Shaft	SUS410
16	Motor housing	SUS304
17	Lubricant oil	(Turbine Oil ISO VG46)

• Mech.seal (sic/sic)material is available upon request.



EF-series

Submersible Sewage Pump



EVERGUSH®

50Hz

Operating Conditions

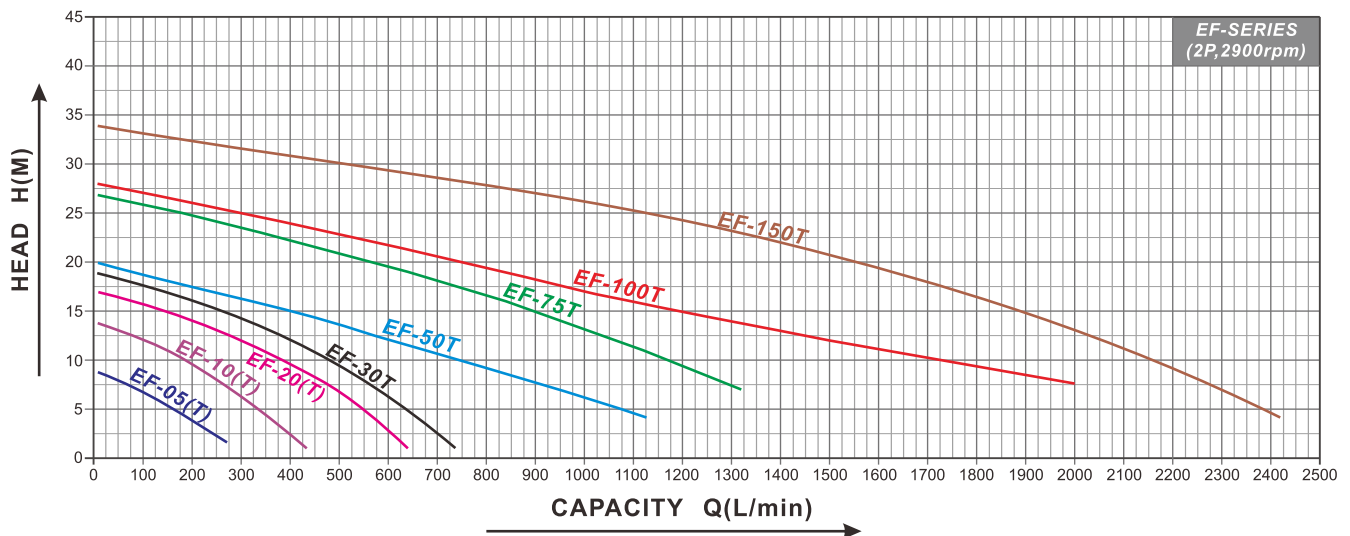
- Liquid temperature: 0~40°C.
- Ambient temperature: Max.40°C.
- Solid passage: Max.35~50mm.
- Don't use in seawater and highly corrosive liquids.
- 24 hours continuous operation is not allowed.

Model Code

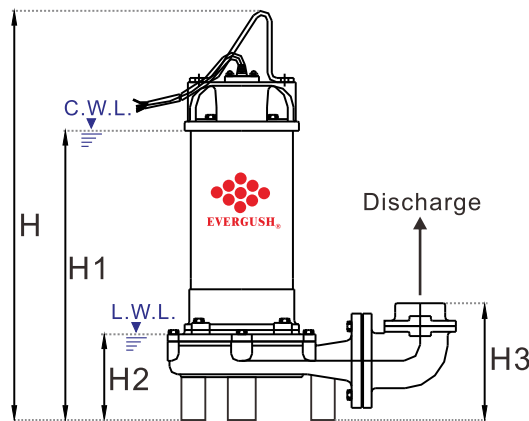
EF-20 A T

EF: Model name of sub. sewage pump
 20: HP: Number/10
 A: Equipped with auto float switch
 T: Three Phase Motor

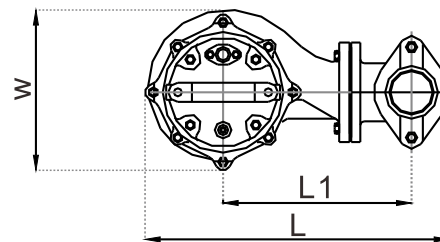
Performance Curves



Specifications & Dimensions



NOTE: Forbid running submersible pumps continuously under L.W.L.



C.W.L.: Continuously Running Water Level.
 L.W.L.: Lowest Running Water Level.

Model	Type	Power		Disch.	Phase	Rated		Max.		Dimensions (mm)							Cable	Net Weight	Solid Passage
		Head	Capacity			Head	Cap.												
		KW	HP	Inch	φ	M	LPM	M	LPM	L	L1	W	H	H1	H2	H3	M	KG	MM
EF-05(A)(T)	Direct	0.37	0.5	2"	1,3	5~6	160~125	9	300	222	115	145	410	297	113	133	5	13	35
EF-10(A)(T)	Direct	0.75	1	2"	1,3	9~10	220~185	14	450	222	115	149	464	340	113	133	5	18	35
EF-20(A)(T)	Elbow	1.5	2	2"; 3"	1,3	9~10	420~380	17	650	387	234	208	548	400	122	153	5	33	35
	Direct									316	163	208	548	400	122	153	5	30	35
EF-30T	Elbow	2.2	3	2"; 3"	3	10~11	480~450	19	750	387	234	208	568	420	122	153	5	35	35
	Direct									316	163	208	568	420	122	153	5	32	35
EF-50T	Elbow	3.7	5	3"; 4"	3	11~13	680~540	20	1200	459	256	227	638	471	160	220	5	55	50
EF-75T	Elbow	5.5	7.5	3"; 4"	3	15~19	900~640	27	1450	459	256	227	678	511	160	220	5	61	50
EF-100T	Elbow	7.5	10	4"	3	17~19	1000~840	28	2100	550	280	310	680	511	210	250	5	87	50
EF-150T	Elbow	11	15	4"	3	18~22	1700~1400	34	2500	560	310	310	730	580	250	310	10	110	50

Remarks: ●(A): Equipped with float switch. ●(T): Three phase motor. ● Specific cable lengths are available upon request.



Product Features

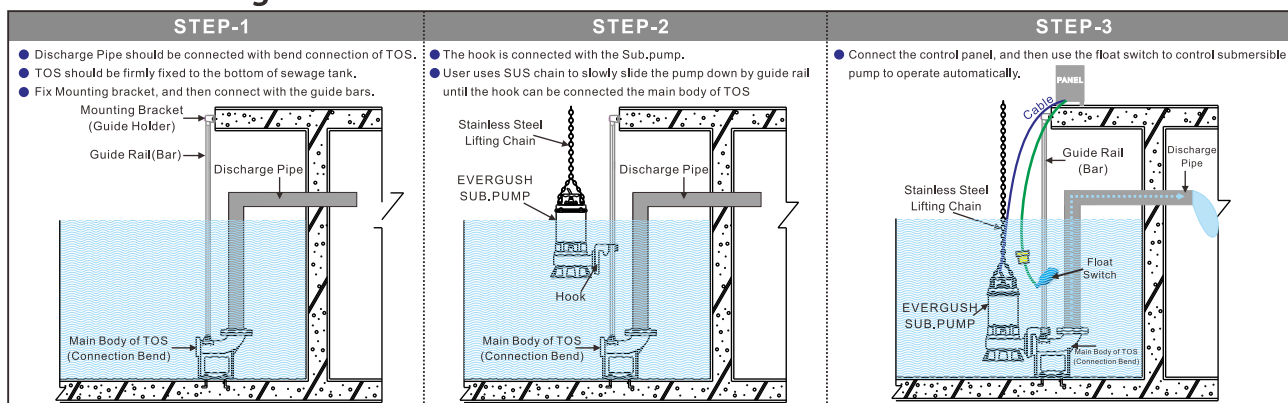
- Through simple and convenient install, we can connect the pump onto guide rail device. Whenever the pump needs maintenance, it can be easily pulled out through guide bar to dismantle, repair or examine the pump. For Safety purpose and to avoid biogas poisoning, the worker no longer needs to go down the septic tank for maintenance.

Applications

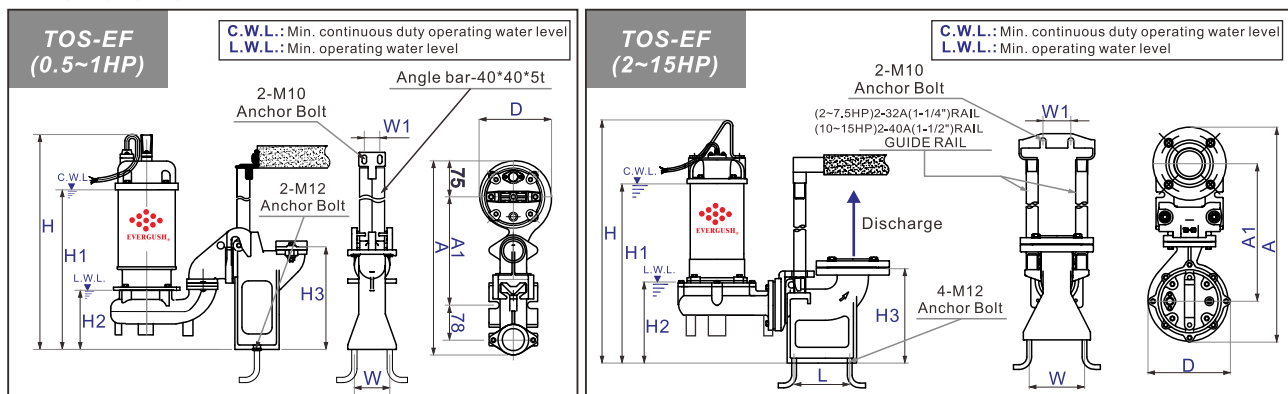
- Animal husbandry and dairying septic tank waste water drainage; sewers, apartments, buildings and basements sewage treatment equipment drainage. Dye house, fur and leather industry and steel industry waste water drainage; other waste water treatment drainage.



Installation Diagram:



Dimensions



Model	Power	Disch.	Dimensions(mm)										Net Weight (kg)
	HP	Inch	A	A1	D	H	H1	H2	H3	L	W	W1	
TOS-EF-05(T)	0.5	2"	425	240	150	422	307	150	225	---	80	35	19
TOS-EF-10(T)	1	2"	425	240	150	502	377	150	225	---	80	35	24
TOS-EF-20(T)	2	2"; 3"	545	350	210	650	480	210	243	110	140	70	49
TOS-EF-30T	3	2"; 3"	545	350	210	670	500	210	243	110	140	70	51
TOS-EF-50T	5	3"; 4"	725	515	230	745	580	270	310	160	150	70	79
TOS-EF-75T	7.5	3"; 4"	725	515	230	785	620	270	310	160	150	70	85
TOS-EF-100T	10	4"	820	550	290	750	550	280	330	210	160	245	125
TOS-EF-150T	15	4"	770	510	310	785	635	305	360	180	160	245	152

Remarks: ● TOS means cast iron guide rail device.(Q.D.C:Quick Discharge Device) ● "T" means 3 phase motor.