



ST/BS/BC-Series 60Hz

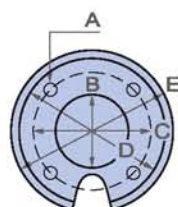
STAINLESS STEEL DEEP WELL PUMPS



ASIA AUTOMATIC PUMP CO.,LTD
www.evergushpump.com.tw/en

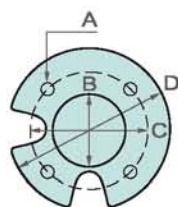


BS5 Technical Data



A: $\phi 10.0\text{mm}$
B: $\phi 39.0\text{mm}$
C: $\phi 76.5\text{mm}$
D: $\phi 87.3\text{mm}$
E: $\phi 96.0\text{mm}$

4" MOTOR

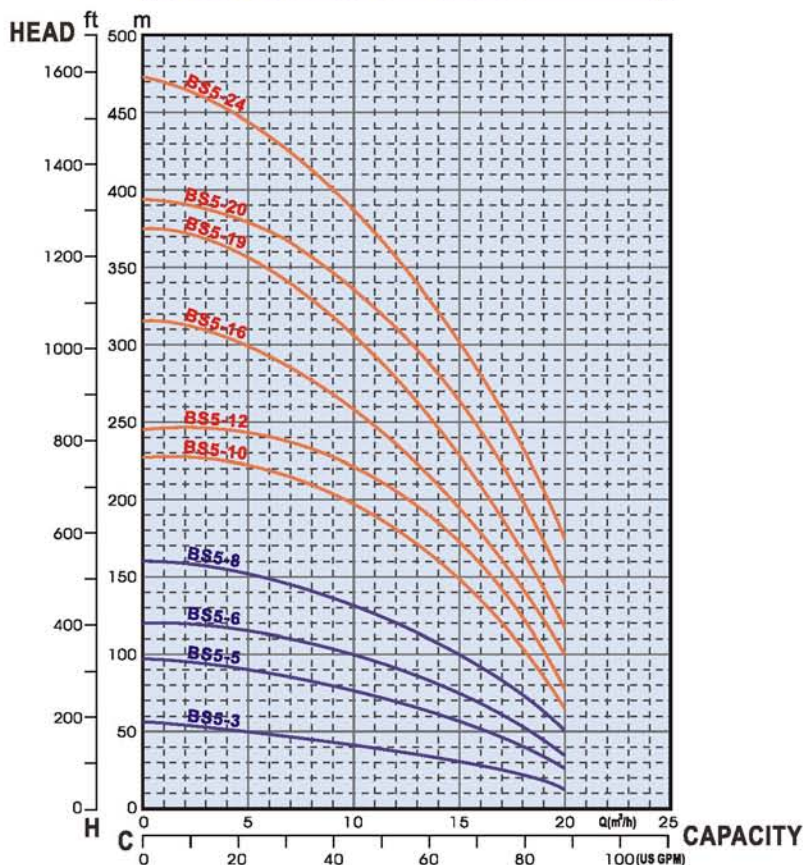


A: $\phi 14.68\text{mm}$
B: $\phi 76.15\text{mm}$
C: $\phi 111.0\text{mm}$
D: $\phi 137.0\text{mm}$

6" MOTOR



PERFORMANCE CURVES



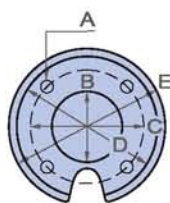
SPECIFICATIONS

● 1 US GPM = 3.785 LPM

TYPE		STAGES	MOTOR		(UNIT:MM) DIMENSION (PUMP END)		H: HEAD(M) C: CAPACITY(GPM)				PUMP END NET WEIGHT (KG)
					STANDARD		MAXIMUM				
			KW	HP	L	L1	H	C	H	C	
4D	BS5-3	3	2.2	3	376.5	124	33	60	55	95	10.4
	BS5-5	5	3.7	5	471.5	124	62	60	96	95	13.6
	BS5-6	6	5.5	7.5	519	124	83	60	120	95	15.2
6D	BS5-6	6	5.5	7.5	510	124	83	60	120	95	15.2
	BS5-8	8	7.5	10	605	124	110	60	161	95	18.4
	BS5-10	10	11	15	700	124	164	60	227	95	21.6
	BS5-12	12	11	15	795	124	189	60	246	95	24.8
	BS5-16	16	15	20	985	124	211	60	316	95	31.2
	BS5-19	19	18.5	25	1127.5	124	250	60	374	95	36.0
	BS5-20	20	18.5	25	1175	124	284	60	394	95	37.6
	BS5-24	24	22	30	1365	124	327	60	472	95	44.0

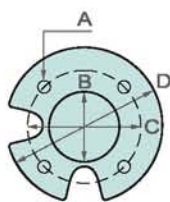
- Standard: Water-immersed Motor.
- FRANKLIN Motor is optional.
- Suitable for 4" and 6" well.

BS6 Technical Data



4" MOTOR

A: $\phi 10.0\text{mm}$
B: $\phi 39.0\text{mm}$
C: $\phi 76.5\text{mm}$
D: $\phi 87.3\text{mm}$
E: $\phi 96.0\text{mm}$

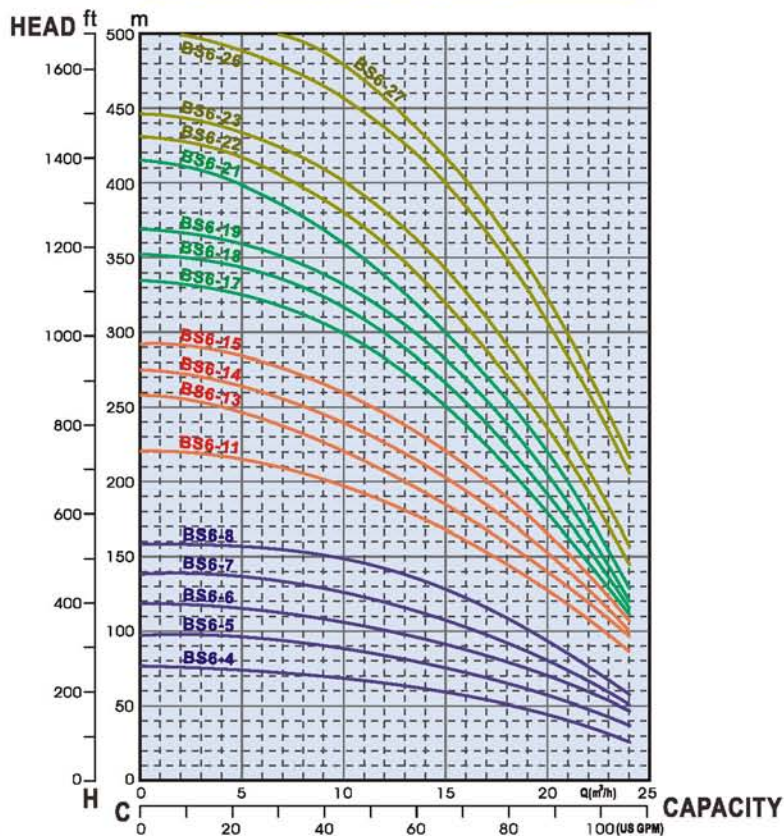


6" MOTOR

A: $\phi 14.68\text{mm}$
B: $\phi 76.15\text{mm}$
C: $\phi 111.0\text{mm}$
D: $\phi 137.0\text{mm}$



PERFORMANCE CURVES



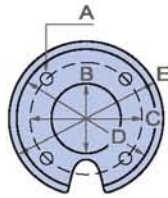
SPECIFICATIONS

● 1 US GPM=3.785 LPM

TYPE		STAGES	MOTOR		DIMENSION (UNIT:MM) (PUMP END)		H: HEAD(M) C: CAPACITY(GPM)				PUMP END NET WEIGHT (KG)
							STANDARD		MAXIMUM		
			KW	HP	L	L1	H	C	H	C	
4D	BS6-4	4	3.7	5	424	127	56	70	75	130	12
	BS6-5	5	5.5	7.5	471.5	127	71	70	97	130	13.5
	BS6-6	6	5.5	7.5	519	127	88	70	119	130	15.2
6D	BS6-5	5	5.5	7.5	462.5	127	71	70	97	130	13.5
	BS6-6	6	5.5	7.5	510	127	88	70	119	130	15.2
	BS6-7	7	7.5	10	557.5	127	102	70	137	130	16.8
	BS6-8	8	7.5	10	605	127	122	70	159	130	18.4
	BS6-11	11	11	15	747.5	127	159	70	221	130	23.2
	BS6-13	13	15	20	842.5	127	175	70	259	130	26.3
	BS6-14	14	15	20	890	127	193	70	276	130	28
	BS6-15	15	15	20	937.5	127	211	70	292	130	29.8
	BS6-17	17	18.5	25	1032.5	127	237	70	334	130	32.7
	BS6-18	18	18.5	25	1080	127	251	70	352	130	34.5
	BS6-19	19	18.5	25	1127.5	127	268	70	369	130	36
	BS6-21	21	22	30	1222.5	127	285	70	414	130	40
	BS6-22	22	22	30	1270	127	303	70	432	130	41.6
	BS6-23	23	22	30	1317.5	127	326	70	447	130	43.6
	BS6-26	26	30	40	1460	127	382	70	508	130	48.4
	BS6-27	27	30	40	1507.5	127	400	70	528	130	50

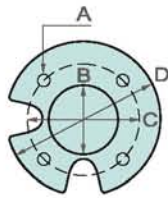
- Standard: Water-immersed Motor.
- FRANKLIN Motor is optional.
- Suitable for 4" and 6" well.

BS8 Technical Data



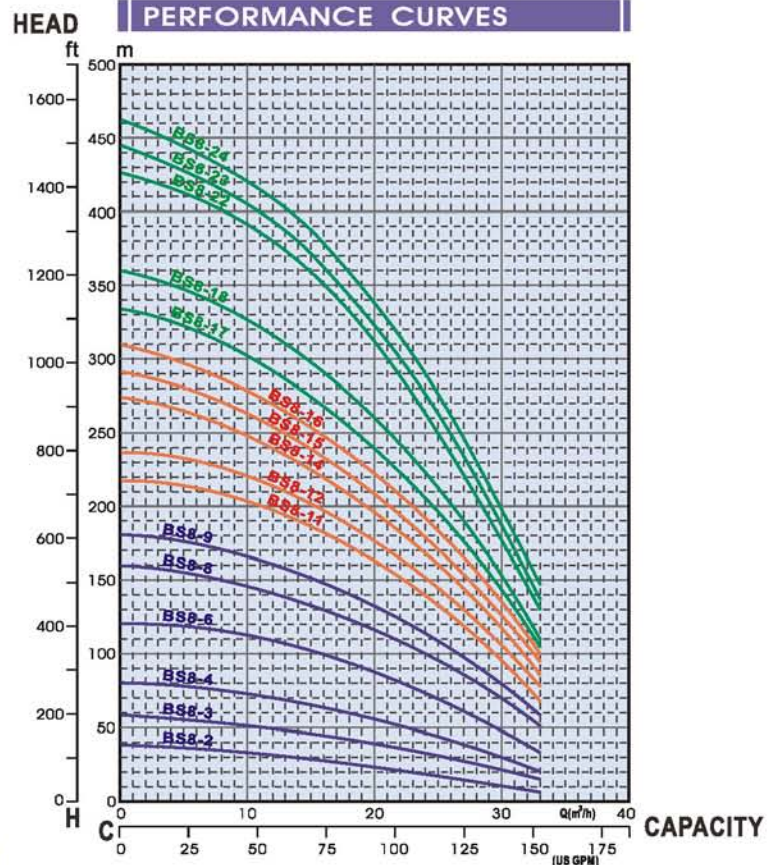
A: $\phi 10.0\text{mm}$
B: $\phi 39.0\text{mm}$
C: $\phi 76.5\text{mm}$
D: $\phi 87.3\text{mm}$
E: $\phi 96.0\text{mm}$

4" MOTOR



A: $\phi 14.68\text{mm}$
B: $\phi 76.15\text{mm}$
C: $\phi 111.0\text{mm}$
D: $\phi 137.0\text{mm}$

6" MOTOR

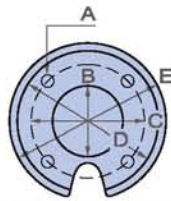


SPECIFICATIONS

TYPE		STAGES	MOTOR		DIMENSION (PUMP END)		(UNIT:MM)		H: HEAD(M)		PUMP END NET WEIGHT (KG)
							C: CAPACITY(GPM)				
			KW	HP	L	L1	STANDARD	MAXIMUM	H	C	
4D	BS8-2	2	2.2	3	329	127	22	95	48	180	9
	BS8-3	3	3.7	5	376.5	127	38	95	58	180	10.5
	BS8-4	4	5.5	7.5	424	127	53	95	80	180	12
6D	BS8-4	4	5.5	7.5	415	127	53	95	80	180	12
	BS8-6	6	7.5	10	510	127	84	95	120	180	15
	BS8-8	8	11	15	605	127	112	95	159	180	18.5
	BS8-9	9	11	15	652.5	127	128	95	180	180	20
	BS8-11	11	15	20	747.5	127	156	95	217	180	21.6
	BS8-12	12	15	20	795	127	170	95	235	180	25
	BS8-14	14	18.5	25	890	127	188	95	274	180	28
	BS8-15	15	18.5	25	937.5	127	200	95	291	180	30
	BS8-16	16	22	30	985	127	214	95	310	180	31.5
	BS8-17	17	22	30	1032.5	127	230	95	334	180	33
	BS8-18	18	22	30	1080	127	250	95	360	180	34.5
	BS8-22	22	30	40	1270	127	298	95	427	180	41
	BS8-23	23	30	40	1317.5	127	310	95	446	180	42.5
	BS8-24	24	30	40	1365	127	337	95	462	180	44

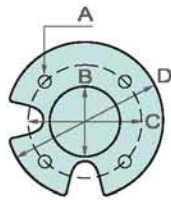
- Standard: Water-immersed Motor.
- FRANKLIN Motor is optional.
- Suitable for 4" and 6" well.

BS12 Technical Data



4" MOTOR

A: $\phi 10.0\text{mm}$
B: $\phi 39.0\text{mm}$
C: $\phi 76.5\text{mm}$
D: $\phi 87.3\text{mm}$
E: $\phi 96.0\text{mm}$

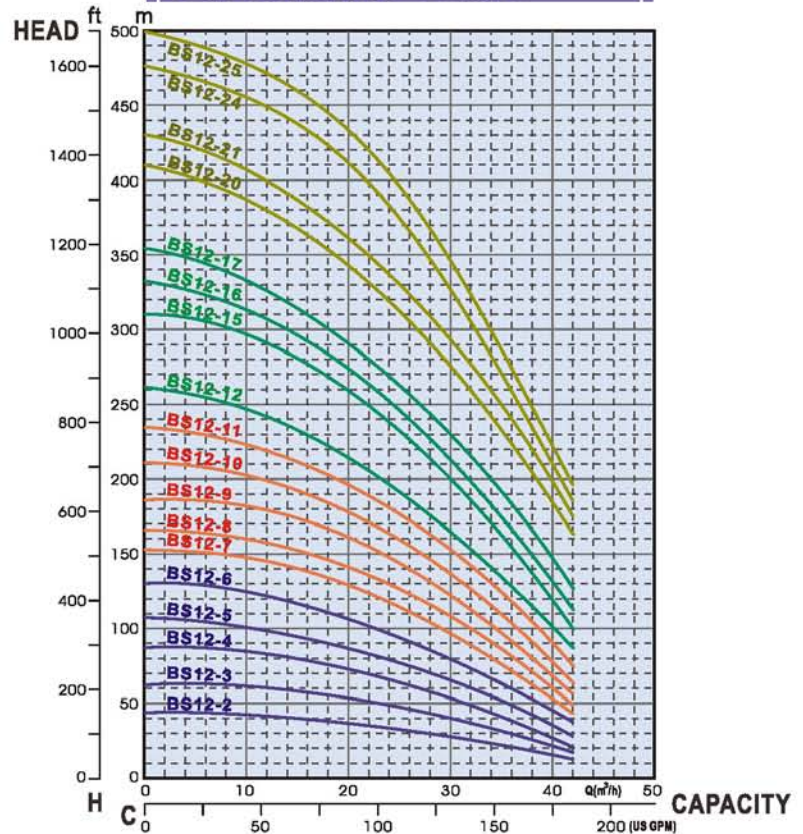


6" MOTOR

A: $\phi 14.68\text{mm}$
B: $\phi 76.15\text{mm}$
C: $\phi 111.0\text{mm}$
D: $\phi 137.0\text{mm}$



PERFORMANCE CURVES

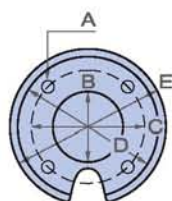


● 1 US GPM=3.785 LPM

TYPE		STAGES	MOTOR		DIMENSION (UNIT:MM) (PUMP END)		H: HEAD(M) C: CAPACITY(GPM)				PUMP END NET WEIGHT (KG)
							STANDARD		MAXIMUM		
					KW	HP	L	L1	H	C	
4D	BS12-2	2	3.7	5	348	127	29	130	41.7	220	9
	BS12-3	3	5.5	7.5	405	127	40	130	63	220	10.8
6D	BS12-3	3	5.5	7.5	396	127	40	130	63	220	10.8
	BS12-4	4	7.5	10	453	127	53	130	88	220	12.5
	BS12-5	5	7.5	10	510	127	65	130	107	220	14.2
	BS12-6	6	11	15	567	127	79	130	131	220	15.9
	BS12-7	7	11	15	624	127	96	130	152	220	17.6
	BS12-8	8	15	20	681	127	108	130	164	220	19.3
	BS12-9	9	15	20	738	127	122	130	185	220	21
	BS12-10	10	18.5	25	795	127	136	130	210	220	22.7
	BS12-11	11	22	30	852	127	153	130	233	220	24.5
	BS12-12	12	22	30	909	127	164	130	263	220	26
	BS12-15	15	30	40	1080	127	197	130	313	220	31
	BS12-16	16	30	40	1137	127	212	130	335	220	33
	BS12-17	17	30	40	1194	127	230	130	357	220	34.5
	BS12-20	20	37	50	1365	127	275	130	409	220	40
	BS12-21	21	37	50	1422	127	292	130	430	220	41.5
	BS12-24	24	45	60	1593	127	324	130	477	220	46.5
	BS12-25	25	45	60	1650	127	344	130	499	220	48

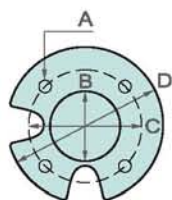
- Standard: Water-immersed Motor.
- FRANKLIN Motor is optional.
- Suitable for 4" and 6" well.

BS15 Technical Data



4" MOTOR

A: $\phi 10.0\text{mm}$
B: $\phi 39.0\text{mm}$
C: $\phi 76.5\text{mm}$
D: $\phi 87.3\text{mm}$
E: $\phi 96.0\text{mm}$

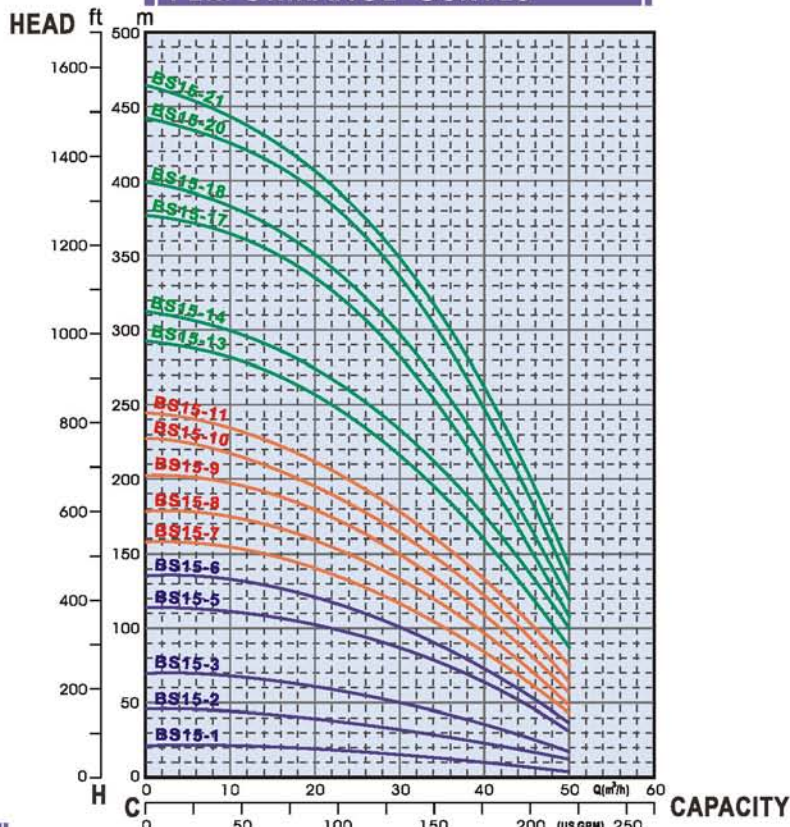


6" MOTOR

A: $\phi 14.68\text{mm}$
B: $\phi 76.15\text{mm}$
C: $\phi 111.0\text{mm}$
D: $\phi 137.0\text{mm}$



PERFORMANCE CURVES



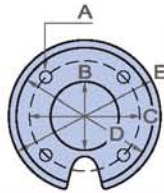
SPECIFICATIONS

● 1 US GPM=3.785 LPM

TYPE		STAGES	MOTOR		(UNIT:MM) DIMENSION (PUMP END)		H: HEAD(M) C: CAPACITY(GPM)				PUMP END NET WEIGHT (KG)
							STANDARD		MAXIMUM		
			KW	HP	L	L1	H	C	H	C	
4D	BS15-1	1	2.2	3	291	127	13	160	21	250	7.4
	BS15-2	2	5.5	7.5	348	127	27	160	44	250	9
6D	BS15-2	2	5.5	7.5	339	127	27	160	44	250	9
	BS15-3	3	7.5	10	396	127	42	160	68	250	10.8
	BS15-5	5	11	15	510	127	74	160	114	250	14.2
	BS15-6	6	15	20	567	127	85	160	135	250	16
	BS15-7	7	15	20	624	127	97	160	157	250	17.6
	BS15-8	8	18.5	25	681	127	113	160	179	250	19.3
	BS15-9	9	22	30	738	127	126	160	202	250	21
	BS15-10	10	22	30	795	127	140	160	228	250	22.7
	BS15-11	11	22	30	852	127	152	160	245	250	24.5
	BS15-13	13	30	40	966	127	183	160	293	250	27.8
	BS15-14	14	30	40	1023	127	200	160	313	250	29.5
	BS15-17	17	37	50	1194	127	240	160	377	250	34.6
	BS15-18	18	37	50	1251	127	253	160	399	250	36.3
	BS15-20	20	45	60	1365	127	285	160	443	250	40
	BS15-21	21	45	60	1422	127	300	160	464	250	41.5

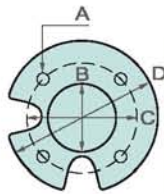
- Standard: Water-immersed Motor.
- FRANKLIN Motor is optional.
- Suitable for 4" and 6" well.

BS18 Technical Data



A: $\phi 10.0\text{mm}$
B: $\phi 39.0\text{mm}$
C: $\phi 76.5\text{mm}$
D: $\phi 87.3\text{mm}$
E: $\phi 96.0\text{mm}$

4" MOTOR

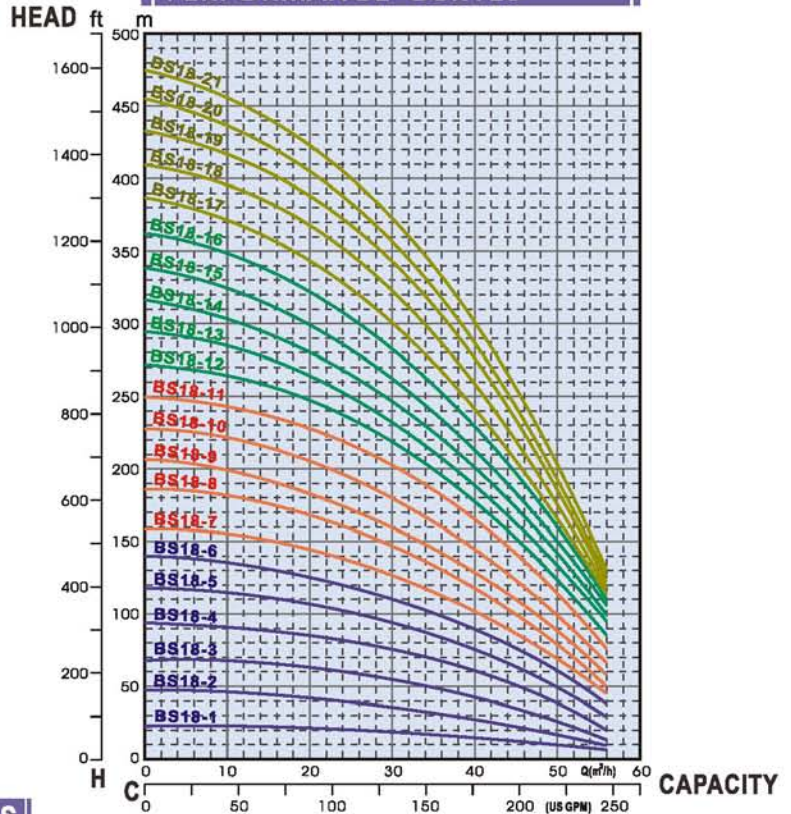


A: $\phi 14.68\text{mm}$
B: $\phi 76.15\text{mm}$
C: $\phi 111.0\text{mm}$
D: $\phi 137.0\text{mm}$

6" MOTOR



PERFORMANCE CURVES



SPECIFICATIONS

TYPE		STAGES	MOTOR		DIMENSION (PUMP END)		H: HEAD(M) C: CAPACITY(GPM)				PUMP END NET WEIGHT (KG)
							STANDARD		MAXIMUM		
					KW	HP	L	L1	H	C	
4D	BS18-1	1	2.2	3	291	127	14	170	22	280	7.5
	BS18-2	2	5.5	7.5	348	127	29	170	47	280	9.4
6D	BS18-2	2	5.5	7.5	339	127	29	170	47	280	9.4
	BS18-3	3	7.5	10	396	127	45	170	67	280	11
	BS18-4	4	11	15	453	127	64	170	93	280	13
	BS18-5	5	11	15	510	127	80	170	118	280	14.8
	BS18-6	6	15	20	567	127	94	170	140	280	16.6
	BS18-7	7	15	20	624	127	107	170	158	280	18.4
	BS18-8	8	18.5	25	681	127	123	170	185	280	20
	BS18-9	9	18.5	25	738	127	135	170	206	280	22
	BS18-10	10	22	30	795	127	152	170	228	280	23.8
	BS18-11	11	26	35	852	127	172	170	249	280	25.5
	BS18-12	12	30	40	909	127	186	170	272	280	27
	BS18-13	13	30	40	966	127	197	170	296	280	29
	BS18-14	14	30	40	1023	127	210	170	316	280	31
	BS18-15	15	37	50	1080	127	221	170	338	280	32.8
	BS18-16	16	37	50	1137	127	240	170	362	280	34.6
	BS18-17	17	37	50	1194	127	252	170	387	280	36
	BS18-18	18	45	60	1251	127	270	170	412	280	38
	BS18-19	19	45	60	1308	127	290	170	433	280	40
	BS18-20	20	45	60	1365	127	302	170	454	280	41.5
	BS18-21	21	45	60	1422	127	316	170	474	280	43.5

● 1 US GPM=3.785 LPM

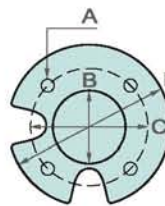
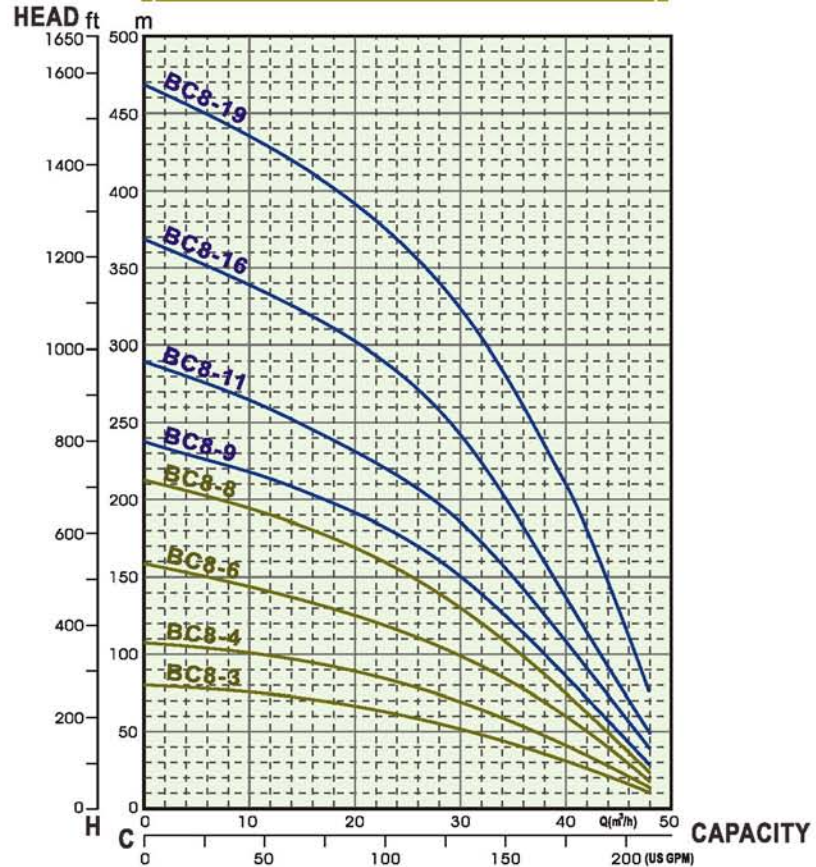
- Standard: Water-immersed Motor.
- FRANKLIN Motor is optional.
- Suitable for 4" and 6" well.



BC8 Technical Data



PERFORMANCE CURVES



A: $\phi 14.68\text{mm}$
B: $\phi 76.15\text{mm}$
C: $\phi 111.0\text{mm}$
D: $\phi 137.0\text{mm}$

6" MOTOR

SPECIFICATIONS

● 1 US GPM=3.785 LPM

TYPE		STAGES	MOTOR		DIMENSION (UNIT:MM) (PUMP END)		H: HEAD(M) C: CAPACITY(GPM)				PUMP END NET WEIGHT (KG)
							STANDARD		MAXIMUM		
			KW	HP	L	L1	H	C	H	C	
8D	BC8-3	3	5.5	7.5	359	165	54	122	80	200	14
	BC8-4	4	7.5	10	406	165	74	122	108	200	16.3
	BC8-6	6	11	15	501	165	104	122	159	200	21
	BC8-8	8	15	20	598	165	140	122	212	200	26
	BC8-9	9	18.5	25	644	165	162	122	237	200	28
	BC8-11	11	22	30	739	165	198	122	290	200	32
	BC8-16	16	30	40	976	165	259	122	368	200	44
	BC8-19	19	37.5	50	1119	165	340	122	468	200	51

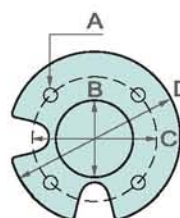
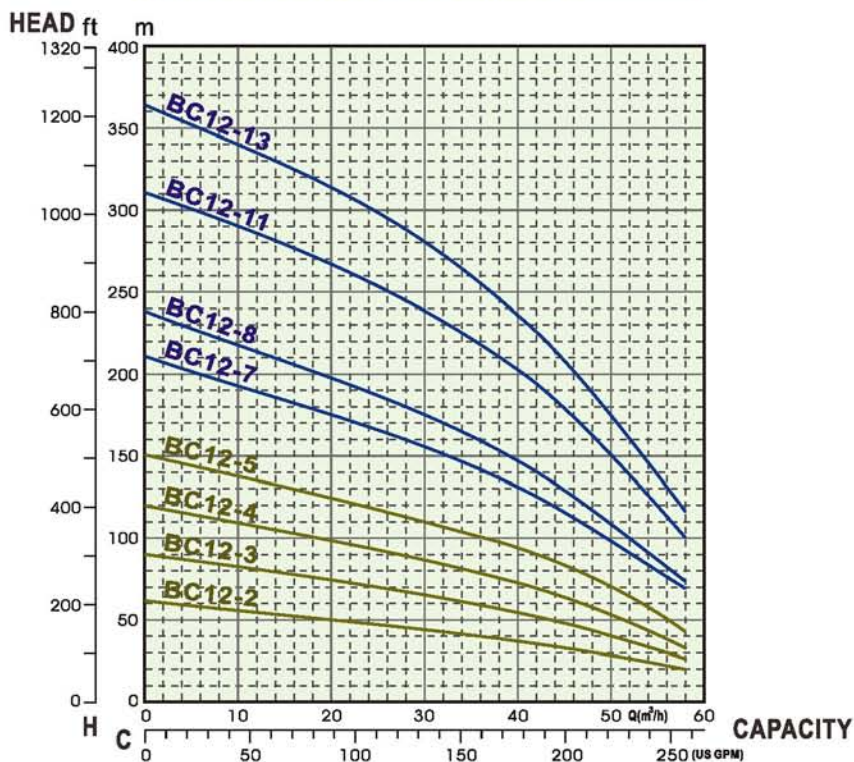
- Standard: Water-immersed Motor.
- FRANKLIN Motor is optional.
- Suitable for 8" well.



BC12 Technical Data



PERFORMANCE CURVES



A: $\phi 14.68\text{mm}$
B: $\phi 76.15\text{mm}$
C: $\phi 111.0\text{mm}$
D: $\phi 137.0\text{mm}$

6" MOTOR

SPECIFICATIONS

1 US GPM=3.785 LPM

TYPE		STAGES	MOTOR		(UNIT:MM) DIMENSION (PUMP END)		H: HEAD(M) C: CAPACITY(GPM)				PUMP END NET WEIGHT (KG)
							STANDARD		MAXIMUM		
			KW	HP	L	L1	H	C	H	C	
8D	BC12-2	2	5.5	7.5	330	165	40	160	62	300	12
	BC12-3	3	7.5	10	387	165	59	160	91	300	14
	BC12-4	4	11	15	444	165	87	160	120	300	17
	BC12-5	5	15	20	501	165	102	160	152	300	20
	BC12-7	7	18.5	25	615	165	142	160	211	300	24
	BC12-8	8	22	30	672	165	160	160	238	300	27
	BC12-11	11	30	40	895	165	218	160	312	300	34
	BC12-13	13	37.5	50	1014	165	257	160	363	300	38

- Standard: Water-immersed Motor.
- FRANKLIN Motor is optional.
- Suitable for 8" well.

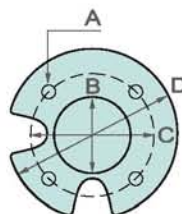
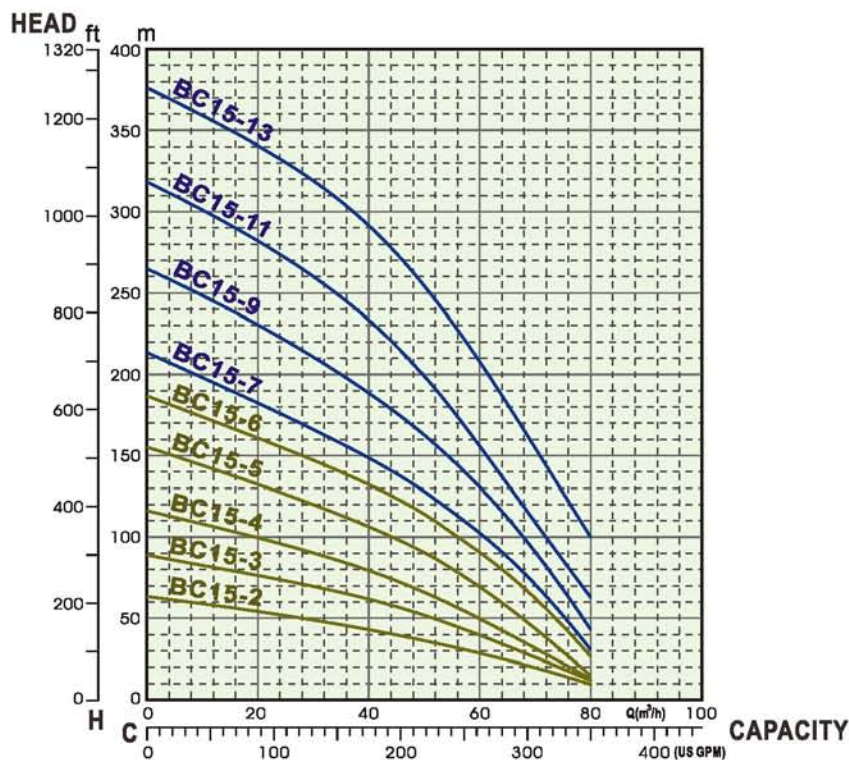


FRANKLIN ELECTRIC

BC15 Technical Data



PERFORMANCE CURVES



A: ϕ 14.68mm
B: ϕ 76.15mm
C: ϕ 111.0mm
D: ϕ 137.0mm

6" MOTOR

SPECIFICATIONS

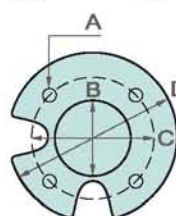
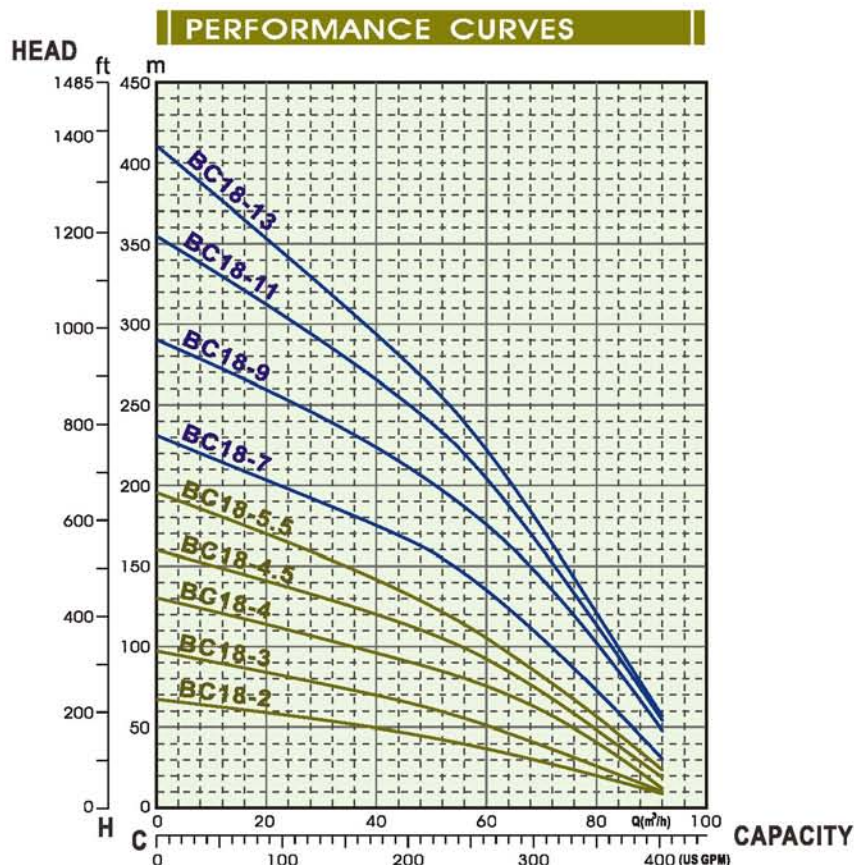
● 1 US GPM=3.785 LPM

TYPE		STAGES	MOTOR		(UNIT:MM) DIMENSION (PUMP END)		H: HEAD(M) C: CAPACITY(GPM)				PUMP END NET WEIGHT (KG)
							STANDARD		MAXIMUM		
			KW	HP	L	L1	H	C	H	C	
8D	BC15-2	2	5.5	7.5	330	165	38	200	63	360	12
	BC15-3	3	7.5	10	387	165	55	200	88	360	15
	BC15-4	4	11	15	444	165	71	200	116	360	17
	BC15-5	5	15	20	501	165	96	200	155	360	19.5
	BC15-6	6	18.5	25	558	165	120	200	187	360	23
	BC15-7	7	22	30	615	165	135	200	213	360	25
	BC15-9	9	30	40	729	165	172	200	265	360	30
	BC15-11	11	37.5	50	843	165	212	200	318	360	34
	BC15-13	13	45	60	957	165	269	200	377	360	38

- Standard: Water-immersed Motor.
- FRANKLIN Motor is optional.
- Suitable for 8" well.



BC18 Technical Data



A: $\phi 14.68\text{mm}$
B: $\phi 76.15\text{mm}$
C: $\phi 111.0\text{mm}$
D: $\phi 137.0\text{mm}$

6" MOTOR

SPECIFICATIONS

1 US GPM=3.785 LPM

TYPE		STAGES	MOTOR		DIMENSION (UNIT:MM) (PUMP END)		H: HEAD(M) C: CAPACITY(GPM)				PUMP END NET WEIGHT (KG)
							STANDARD		MAXIMUM		
					KW	HP	L	L1	H	C	
8D	BC18-2	2	7.5	10	340	165	40	240	67	400	12
	BC18-3	3	11	15	400	165	55	240	97	400	15
	BC18-4	4	15	20	460	165	79	240	130	400	17
	BC18-4.5	5	18.5	25	520	165	99	240	160	400	20
	BC18-5.5	6	22	30	580	165	113	240	195	400	22
	BC18-7	7	30	40	640	165	146	240	231	400	24
	BC18-9	9	37.5	50	760	165	187	240	290	400	30
	BC18-11	11	45	60	880	165	220	240	355	400	35
	BC18-13	13	55	75	1000	165	240	240	410	400	41

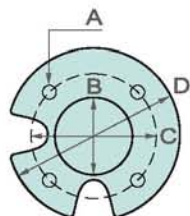
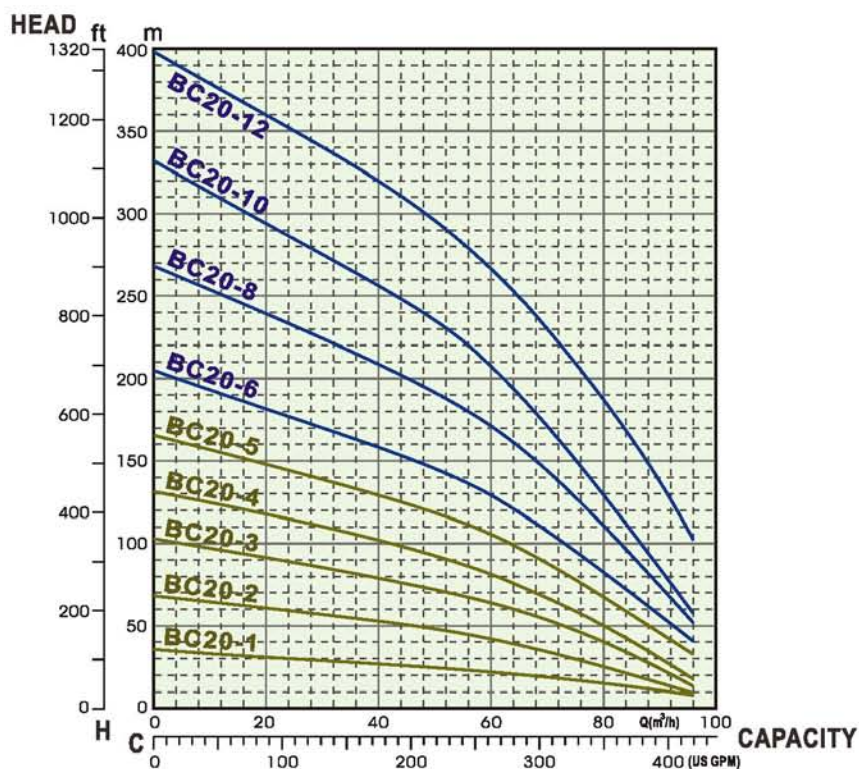
- Standard: Water-immersed Motor.
- FRANKLIN Motor is optional.
- Suitable for 8" well.



BC20 Technical Data



PERFORMANCE CURVES



A: $\phi 14.68\text{mm}$
B: $\phi 76.15\text{mm}$
C: $\phi 111.0\text{mm}$
D: $\phi 137.0\text{mm}$

6" MOTOR

SPECIFICATIONS

● 1 US GPM=3.785 LPM

TYPE		STAGES	MOTOR		DIMENSION <small>(UNIT:MM)</small> <small>(PUMP END)</small>		H: HEAD(M) C: CAPACITY(GPM)				PUMP END NET WEIGHT (KG)
							STANDARD		MAXIMUM		
			KW	HP	L	L1	H	C	H	C	
8D	BC20-1	1	5.5	7.5	280	165	22	250	35	440	9
	BC20-2	2	7.5	10	340	165	43	250	58	440	12
	BC20-3	3	15	20	400	165	64	250	102	440	15
	BC20-4	4	18.5	25	460	165	83	250	131	440	17
	BC20-5	5	22	30	520	165	107	250	166	440	20
	BC20-6	6	30	40	580	165	131	250	205	440	22
	BC20-8	8	37.5	50	700	165	173	250	268	440	27
	BC20-10	10	45	60	820	165	210	250	332	440	32
	BC20-12	12	55	75	940	165	270	250	398	440	38

- Standard: Water-immersed Motor.
- FRANKLIN Motor is optional.
- Suitable for 8" well.

