

Control panel of water
boosting pump system



Control panel of submersible
sewage/wastewater pumps



Soft start control panel
of water transfer pump
(Customized panel)



Control panel of submersible
transfer pump/ bore pump



Automatic booster pump system



Submersible sewage/wastewater pump



Water transfer
/supply pumps



Submersible transfer
pumps/bore pumps

OPTIONAL



Soft start controller

Applications

1. Submersible or ground type water supply systems or submersible sewage drainage systems.
2. Water supply for schools, public facilities and military camps.
3. Single control, multiple control, alternating or parallel operation control.

Features

1. We can custom made control panel with different schemes for different environment.
2. We can add soft start controller to reduce water hammer effect and operation noise depend on customer demands.
3. Customers can choose graphite electrode, float switch or level switch with water supply control unit.
4. Customers can adjust pump operation by different pressure, capacity and temperature with PLC function.
5. We can provide monitor port which can organize operation and monitor interface according to customer demands.

Specifications

1. Casing material: Steel(SS400). (We can custom made stainless steel material depend on customer demands.)
2. Single layer door is our standard type. We can custom made double layer door depend on customer demands.
3. IP protection class: IP54



- Pressure differential boosting control alternating or parallel operation
- Automatic simplex operation function
- You can choose auto or manual operation at your convenient.
- It has fuse protection control circuit.
- It can force single pump to start operation.
- It will add timer replay which reduce frequent on/off situation.

Panel instructions and dimensions

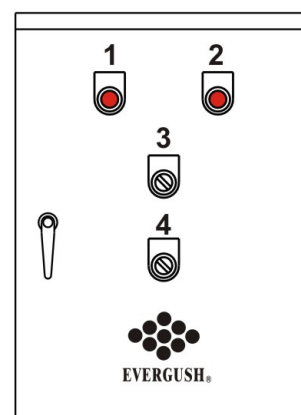
Instructions

No	Name	No	Name
1	No 1 running(red)	3	Auto Stop Manual
2	No 2 running(red)	4	No 1 Stop No 2

Outdoor type dimensions

Classification		(HP)	SIZE (Unit:MM)			Material
			W	H	D	
Alternative Operation	220V	1~10	450	500	200	iron
	380V	1~20				
	220V	15~20	500	550	200	iron

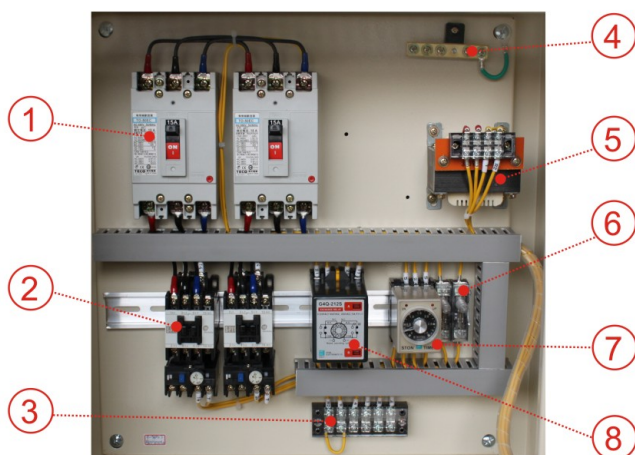
Layout



Remarks: 1. Appearance、material、dimension、coating...etc. All can be custom-made by customer requirements. 2. Above 20hp, the control panel will be custom-made.

Main Components

Inside layout



Components table

NO	Name	NO	Name
1	No fuse breaker	5	Transformer
2	Magnetic switch	6	Fuse
3	Terminal block	7	Timer relay
4	Grounding conductor	8	Alternating relay

Remarks: ● Components layout usually varies with different horsepower.
● We could change components to designated brands by customers.



Ground type water transfer pumps



Submersible type transfer pumps

- Automatic alternating or parallel operation
- Automatic simplex operation function
- You can choose auto or manual operation at your convenient.
- It has fuse protection control circuit.
- It can force single pump to start operation.
- Level controller will prevent motor to burn up from dry running.

Panel instructions and dimensions

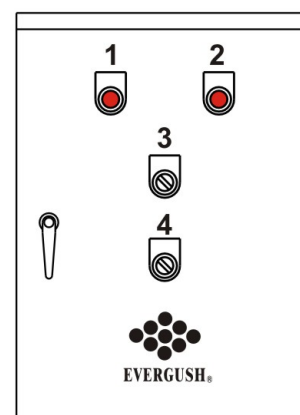
Instructions

No	Name	No	Name
1	No 1 running	3	Auto Stop Manual
2	No 2 running	4	No. 1 Stop No. 2

Outdoor type dimensions

Classification		(HP)	SIZE (UNIT:MM)			Material
			W	H	D	
Alternative operation	220V	1~10	450	500	200	iron
	380V	1~20				
	220V	15~20	500	550	200	iron

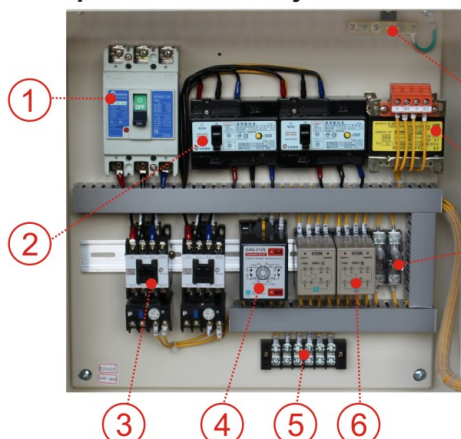
Layout



Remarks: 1. Appearance、material、dimension、coating...etc. All can be custom-made by customer requirements. 2. Above 20hp, the control panel will be custom-made.

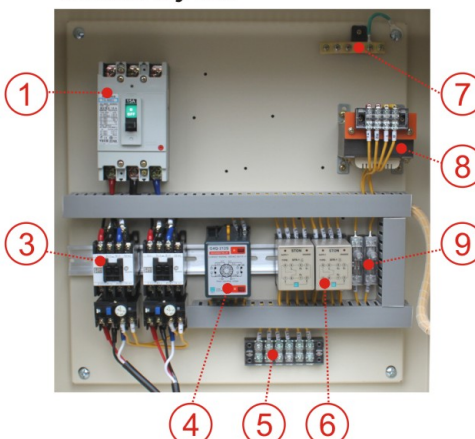
Main Components

Submersible type control panel--Inside layout



Remarks: For safety concern, we add earth leakage circuit breaker for submersible pumps control panel

Ground type control panel--Inside layout



Components table

NO	Name
1	No fuse breaker
2	Earth leakage circuit breaker
3	Magnetic switch
4	Alternating relay
5	Terminal block
6	Level controller
7	Grounding conductor
8	Transformer
9	Fuse

Remarks: 1.Components layout usually varies with different horsepower. 2.We could change components to designated brands by customers.



- Automatic submersible pumps alternating or parallel operation
- You can choose auto or manual operation at your convenient.
- It has fuse protection control circuit.
- It can force single pump to start operation.

Panel instructions and dimensions

Instructions

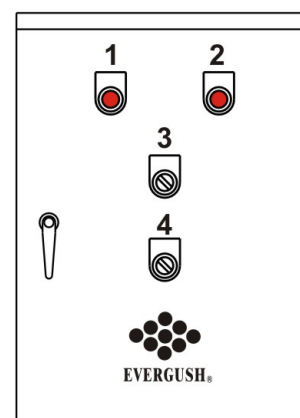
No	Name	No	Name
1	No 1 running	3	Auto Stop Manual
2	No 2 running	4	No. 1 Stop No. 2

Outdoor type dimensions

Classification		(HP)	SIZE (UNIT:MM)			Material
			W	H	D	
Submersible	220V	1~10	450	500	200	iron
Alternative	380V	1~20				
operation	220V	15~20	500	550	200	iron

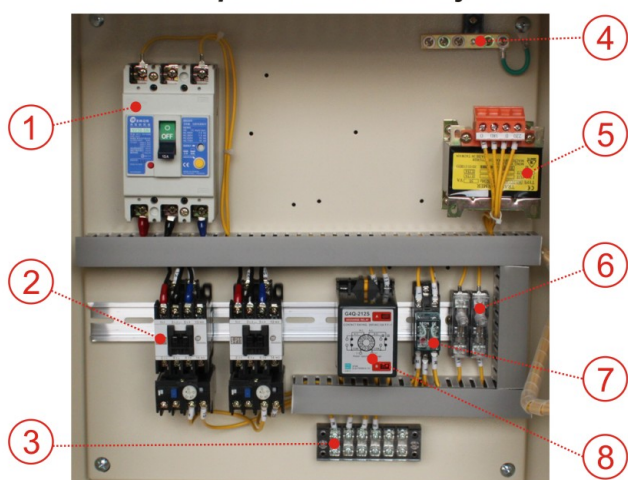
Remarks: 1. Appearance、material、dimension、coating...etc. All can be custom made by customer requirements. 2. Above 20hp, the control panel will be custom made.

Layout



Main Components

Submersible sewage pump control panel--inside layout



Components table

NO	Name	NO	Name
1	Earth leakage circuit breaker	5	Transformer
2	Magnetic switch	6	Fuse
3	Terminal block	7	Timer relay
4	Grounding conductor	8	Alternating relay

Remarks: ● Components layout usually varies with different horsepower.
● We could change components to designated brands by customers.