



Standard Fire-fighting pump set
(Electric motor)



OPTIONAL
Fire-fighting pump with Jockey pump set
(Electric Motor)

▲ Main Pump

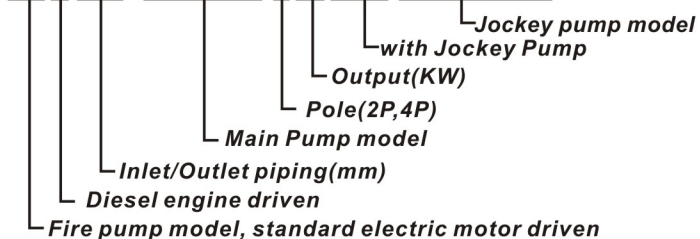
XA-series (DIN24255)
End suction centrifugal pump



- Pump inlet: 2"~5"
- Pump outlet: 1 1/4"~4"
- Head range: 37~97M
- Capacity: 300~4800L/min

▲ Model Code

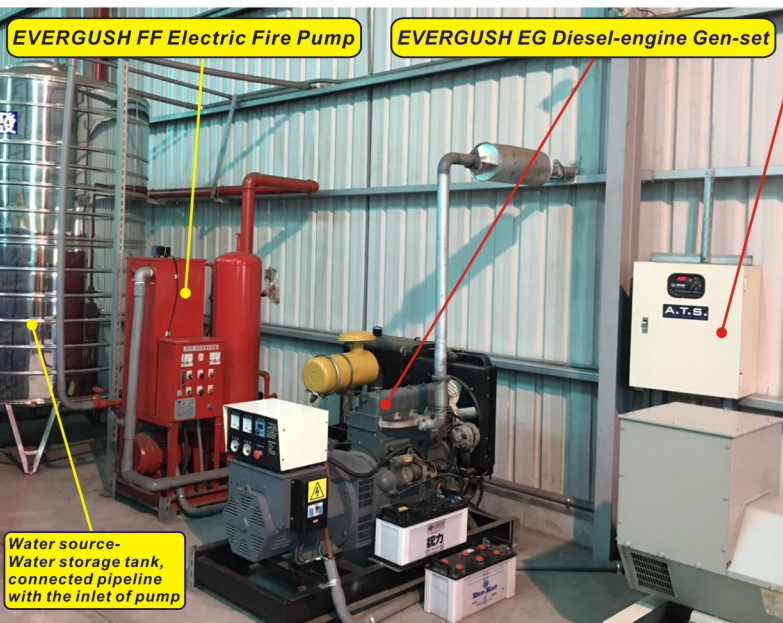
FFE100- XA8026-255+JP-ECDL4-14



▲ Applications

- Auto water supply and boost water pressure to the fire sprinkler system, fire hydrant, fire foam sprinkler system in the building, shopping mall, hotel, factory, stadium, parking area, station, airport, school,.,etc.

▲ Installation ways



▲ A.T.S.(Automatic Transfer Switch panel)



Electricity "ON"
Normal condition, electricity is offered by power company.



When Fire occurs, electricity shut down. ATS auto switch to Diesel engine Generator set-"ON", start the Gen-set.

EVERGUSH Electric Fire Pump Sets and Diesel Gen-set are installed in the different engine rooms.



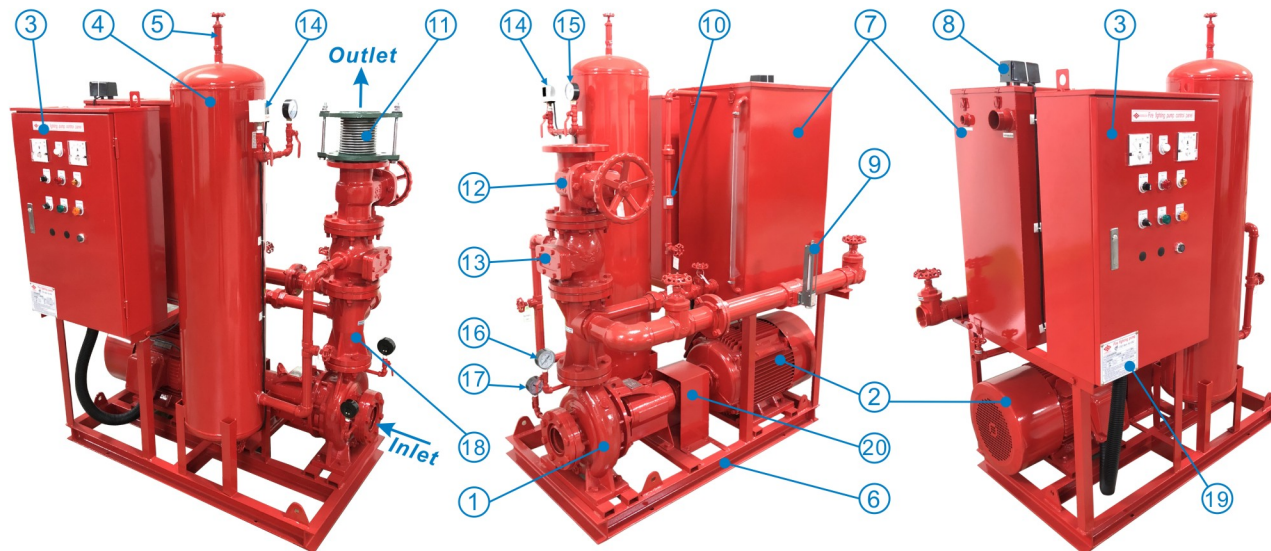
EVERGUSH Diesel engine Generator set



EVERGUSH Electric Fire-fighting Pump Sets

Structure & Main Components

EVERGUSH Fire-fighting pump set is all-in-one design, included pump, electric motor, control panel, pressure tank, water priming tank, valves, flow meter, and other accessories. All are incorporated into one auto booster pump set package. All-in-one design can save installation space and reduce dispute when doing maintenance.



No.	Name	No.	Name	No.	Name	No.	Name
1	Centrifugal pump	6	Base	11	Flexible joint	16	Pressure gauge
2	Electric motor	7	Water priming tank	12	Gate valve	17	Vacuum gauge
3	Control panel	8	Liquid level control switch	13	Check valve	18	4-way valve
4	Pressure tank	9	Flow meter	14	Pressure switch	19	Nameplate
5	Safety valve	10	Heat escape valve	15	Pressure gauge	20	Coupling & cover

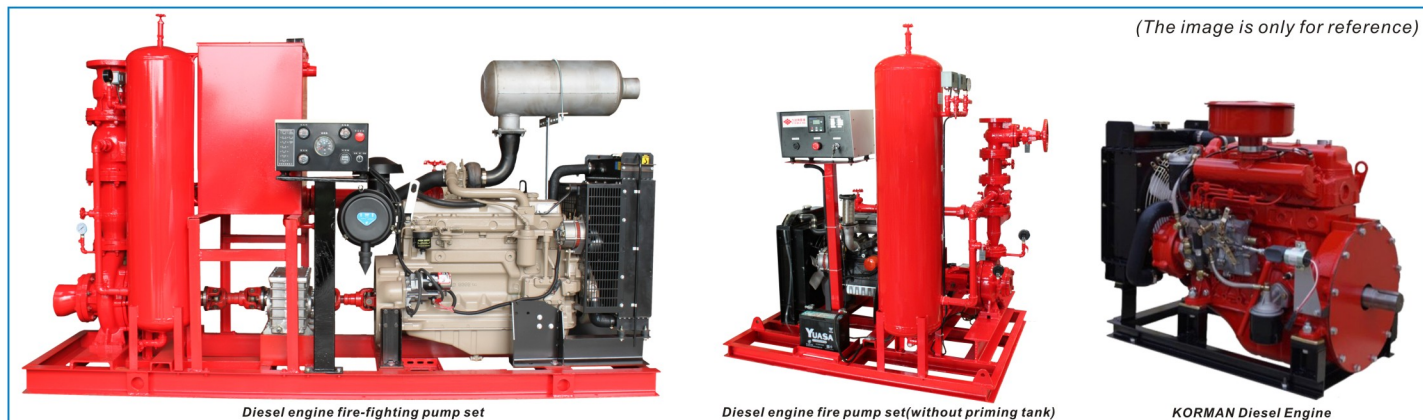


Standard Control Panel illustration



Manu. Stop Auto Turn Arrow to Auto Operation or Stop Running or Manual Operation	Run When manual operation, press Red Run button, to run the pump.	Overload When overload occurs, the orange Overload lamp will light up, the buzzer will ring.
OFF Alarm On Always Turn Arrow to "On", when overload or water shortage occurs, buzzer will ring.	Stop When manual operation, press Green Stop button, to stop the pump.	Overload When water shortage in storage tank occurs, the orange overload lamp will light up, the buzzer will ring.

Optional-Diesel engine Fire-fighting pump set



- Diesel-engine driven fire pump set is available upon special request
- All-in-one customized design, included pump, diesel engine, control panel, pressure tank, water priming tank (optional), valves, flow meter, battery, fuel tank, silencer, and other accessories. All are incorporated into one auto booster pump set package.
- Standard Diesel engine selection: **KORMAN** made in South Korea. (International brand diesel engines are available upon special request)

Diesel Model	Cyl.	Borex Stroke	Disp.	Max. power		Max. torque		Fuel
	EA	mm	liter	kw	rpm	Nm	rpm	g/kw.h
3KMYP-15	3	85X90	1.53	23	3000	90	2100	≤248
4KMYP-18	4	85X90	1.81	29	3000	100	2100	≤240
4KMYP-20	4	85X90	2.16	34	3000	115	2100	≤240
4KMYP-30	4	90X105	2.67	42	3000	150	2100	≤235
4KYMP-40	4	105X118	4.09	70	3000	260	2100	≤232
4KMYP-48	4	108X118	4.32	76	3000	290	2100	≤232

KORMAN Engine

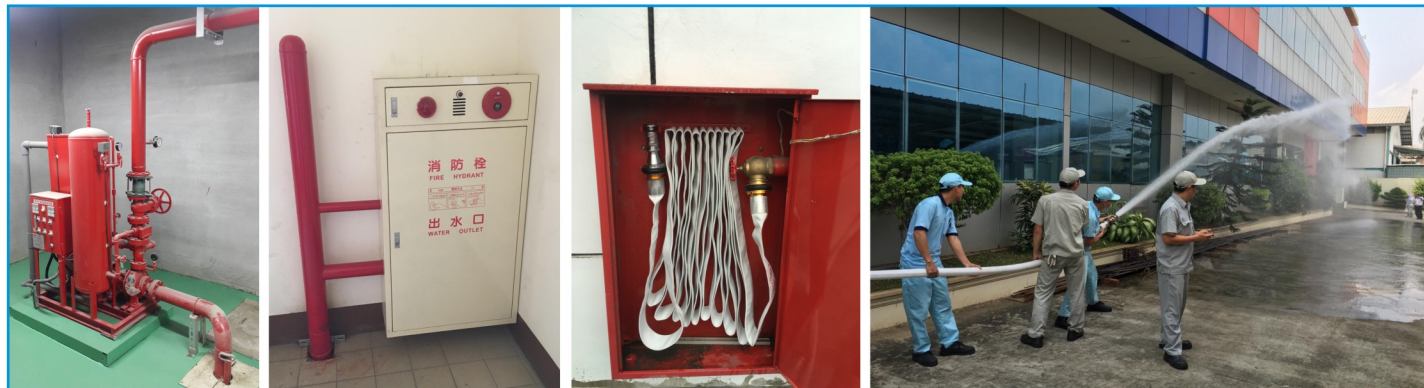
Specifications & Performance Table

FF Fire-fighting Pump set (Electric motor driven)							1 Gal/min = 3.785 L/min			
Model	Output		Pole	Inlet	Outlet	Impeller dia.	Max. Head	Rated Head	Rated Capacity	
	KW	HP	P	Inch	Inch	MM	M	M	L/min	M³/hr
FF80-XA3220-27.5	7.5	10	2	3"	3"	214	64	59~61	300~240	18~14.4
FF80-XA4020-211	11	15	2	3"	3"	214	64	56~62	540~360	32.4~19.6
FF100-XA5020-215	15	20	2	4"	4"	214	63	50~57	1200~960	72~57.6
FF80-XA3226-215	15	20	2	3"	3"	264	101	95~97	360~300	19.6~18
FF80-XA4026B-215	15	20	2	3"	3"	245	83	77~80	540~420	32.4~25.2
FF80-XA4026-218	18.5	25	2	3"	3"	264	98	90~94	600~480	36~28.8
FF100-XA5026B-222	22	30	2	4"	4"	245	88	79~84	960~720	57.6~43.2
FF100-XA5026-230	30	40	2	4"	4"	264	102	94~97	960~840	57.6~50.4
FF100-XA6526C-230	30	40	2	4"	4"	235	78	70~73	1680~1440	100.8~86.4
FF100-XA6526A-237	37	50	2	4"	4"	255	92	86~88	1680~1440	100.8~86.4
FF150-XA8020-237	37	50	2	6"	6"	214	62	58~59	2700~2400	162~144
FF150-XA6526-245	45	60	2	6"	6"	264	100	90~95	1920~1440	115.2~86.4
FF150-XA8026C-245	45	60	2	6"	6"	235	77	69~71	2700~2400	162~144
FF150-XA8026A-255	55	75	2	6"	6"	255	91	83~86	2700~2400	162~144
FF150-XA8026-275	75	100	2	6"	6"	264	98	90~93	2700~2400	162~144
FF150-XA10026C-275	75	100	2	8"	6"	235	79	67~72	4200~3600	252~216
FFE Fire-fighting Pump set (KORMAN Diesel engine driven)							1 Gal/min = 3.785 L/min			
Model	Output	Speed	Inlet	Outlet	Impeller dia.	Max. Head	Rated Head	Rated Capacity		
	KW	RPM	Inch	Inch	MM	M	M	L/min	M³/hr	
FFE80-XA4020-223-KM	23	3000	3"	3"	214	64	56~62	540~360	32.4~19.6	
FFE80-XA4026B-229-KM	29	3000	3"	3"	245	83	77~80	540~420	32.4~25.2	
FFE100-XA5026C-234-KM	34	3000	4"	4"	235	81	71~77	960~720	57.6~43.2	
FFE100-XA5026B-242-KM	42	3000	4"	4"	245	88	79~84	960~720	57.6~43.2	
FFE150-XA6526-276-KM	76	3000	6"	6"	264	100	90~95	1920~1440	115.2~86.4	

- Special performance requirement & customized design is available upon request.
- Please contact with EVERGUSH distributor if you need detailed technical data or dimensions for certain model.

▲ Main applications of EVERGUSH Fire-fighting pump

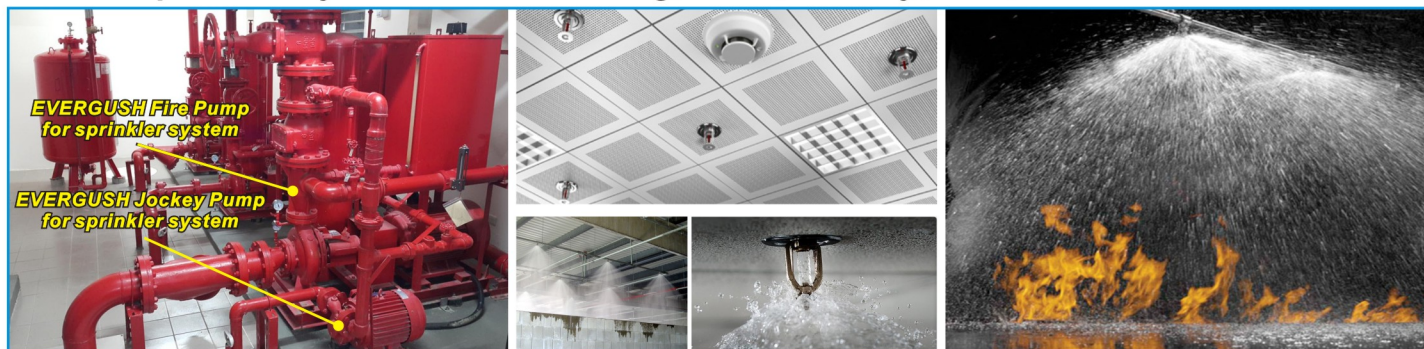
- When fire occurs, it could be too late to put out the fire because fire trucks could be stuck in traffic jam or narrow street. **EVERGUSH** All-in-one fire-fighting pump set is **the best choice** for you to protect human life, property and safety.
- For **Fire hydrant** in the building, factory, hotel, school, ...etc.



- For **foam sprinkler system** in parking lot of building
Water mixed with foam for extinguishing fire contained gasoline in parking lot



- For **sprinkler system** in the building, hotel, factory, mall, ...etc.



▲ Remarkable Sales Records

EVERGUSH is TOP 1 Fire-fighting pump maker & brand in Taiwan.

- Taipei MRT (Mass Rapid Transit) Stations.
- Kaohsiung (Mass Rapid Transit) Stations.
- Taiwan High Speed Rail Stations.
- Taiwan Railway Stations.
- Fo Guan Shan Buddha Memorial Center.
- Taipei Arena.
- Taoyuan International Airport.
- Taichung International Airport.
- Kaohsiung International Airport.
- Kaohsiung Software Technology Park.
- Hsinchu Science Park.
- Taichung Science Park.
- Tainan Science Park.
- Formosa Plastics Corporation Plant.
- Exported to Japan, Philippines, Indonesia, Vietnam, China, Myanmar, Saipan island, ...etc.



Taiwan High Speed Rail Station



KAOHSIUNG MRT Station, TAIWAN



Taipei Arena

