



ETH200



ETH400



ETH800

Features

1. Built-in microchip control. Automatic power off when no water is detected within 60 seconds, to avoid the motor being burn up.
2. Quiet operation. The supply of water pressure is stable, and the water pressure will not change suddenly when taking a hot bath. The water temperature will not suddenly become cold or hot.
3. All-in-one design, compact size saves installation space.
4. The pump casing structure is made of heat-resistant engineering plastic- PPO, and the wetted parts are no rusty. The motor shaft also won't get stuck easily due to leave unused for a long time.
5. If the pump is installed outdoors, it is recommended to install a cover for protection. It can protect ETH series electronic parts from damage due to heavy rain or direct sunburn, and prolong the service life of the pump.

Operating Conditions

1. Ambient Temp.: Max. 45°C.
2. Liquid Temp.: 2~80°C.
3. Relative humidity: Max. 85%(RH).
4. Working pressure: Max. 5 bar.
5. Before starting the pump, make sure that the inlet water pressure cannot be greater than pre-set activation pressure from the factory.
6. Applicable liquids: drinking water or other liquids that are not corrosive and have characteristics close to clean water. Not suitable for pumping groundwater or hot water which is over 80°C.

Model	Power	Activation Pressure
ETH200	1/4HP	1.2 bar
ETH400	1/2HP	1.6 bar
ETH800	1HP	2.0 bar

- Pre-set activation pressure is adjustable by professional.

Applications

1. Auto boost water pressure to the house, apartment, villa, school, restaurant, school, beauty shop, ...etc.
2. Auto boost water pressure to garden sprinkler, heater, toilet, washing machine, sanitary equipment, ...etc.
3. Boosting water pressure to water treatment equipments.
4. Hot water pressure boosting from solar heater.

Motor Spec.

1. Voltage: 1Ø110/220V*60Hz.
2. Enclosed class: IP54.
3. Insulation: E class.
4. Enclosed Fan-cooled, 2P motor.
5. Built in overload motor protector.

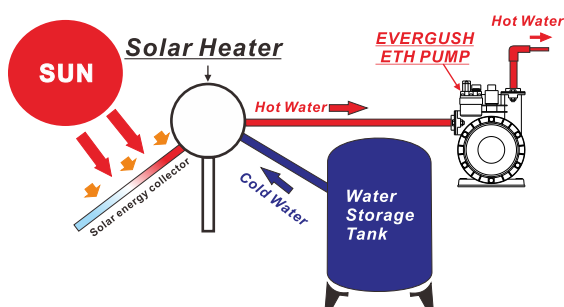
Optional



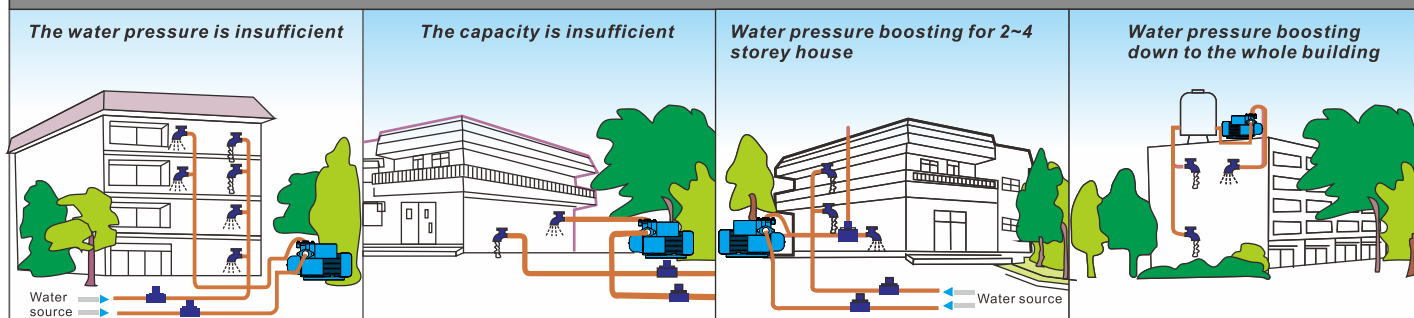
ETH pump with extra protective cover

Installation diagram

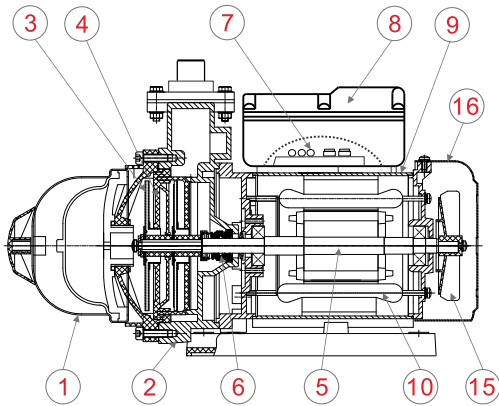
For solar heater system



Installation of ETH Pump

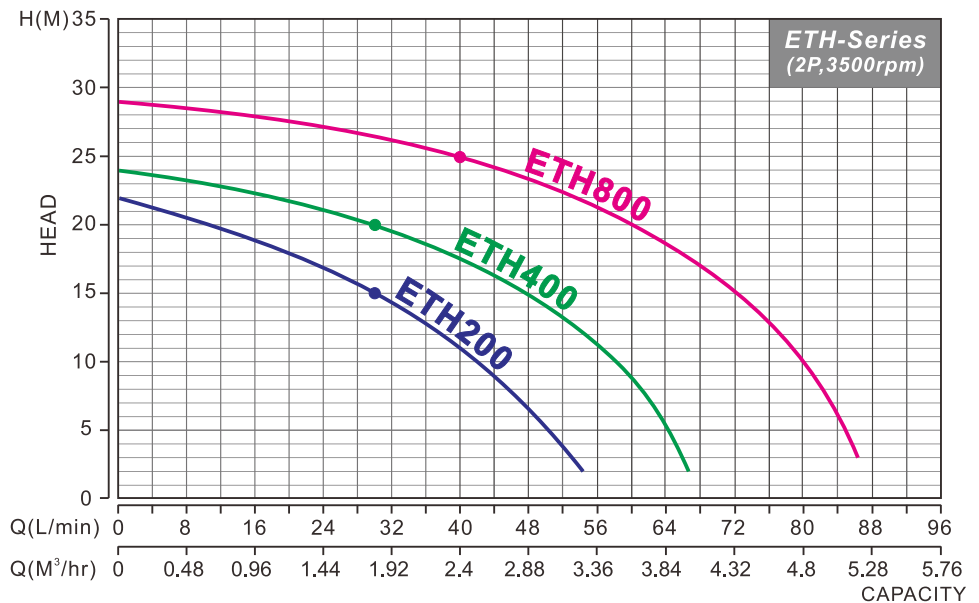
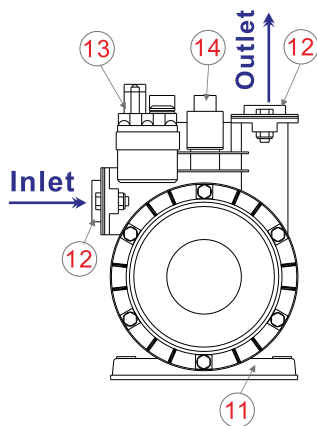


Main Parts & Materials



NO.	Name	Material	NO.	Name	Material
1	Pressure Tank	SUS304	9	Motor Shell	Iron:ETH200/400 Aluminum alloy:ETH800
2	Pump Casing	NORYL(PPO)	10	Motor Coils	Copper
3	Impeller	SUS304	11	Base	ABS
4	Guide Vane	NORYL(PPO)	12	Flanges	SUS304
5	Motor Shaft	SUS410	13	Flow Sensor	ABS
6	Mech. Seal	CA/CE/VITON	14	Pressure Switch	NYLON
7	CPU Board	Coverd by Epoxy	15	Motor Fan	ABS
8	Terminal Box	ABS	16	Back Cover	ABS

Performance Curves

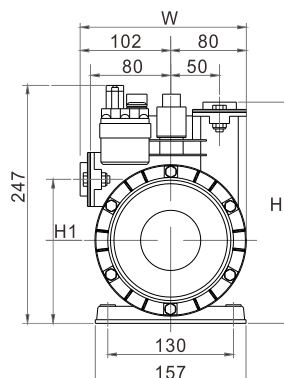
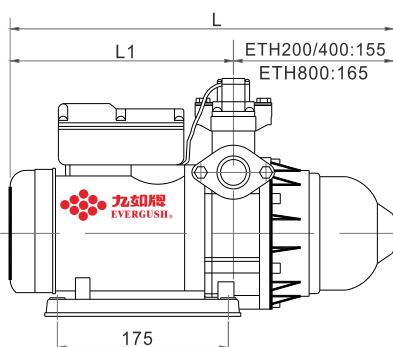


Specifications

Model	Power		Inlet/Outlet		Pole	Phase	Voltage	Pressure		Rated Head	Rated Flow	Max. Head	Max. Flow
	W	HP	Inch	mm				On (bar)	Off (bar)				
ETH200	180	1/4	3/4"	20	2	1	110/220	1.2	2.2	15	30	22	56
ETH400	370	1/2	1"	25	2	1	110/220	1.6	2.4	20	30	24	68
ETH800	750	1	1"	20	2	1	110/220	2.0	2.9	25	40	29	88

Suction Lift: Max. 3M

Dimensions



UNIT:MM

Model	Dimensions (mm)					Net Weight (KG)
	L	L1	W	H	H1	
ETH200	385	230	182	225	150	7.2
ETH400	400	245	182	225	150	8.0
ETH800	415	250	182	225	155	10.4