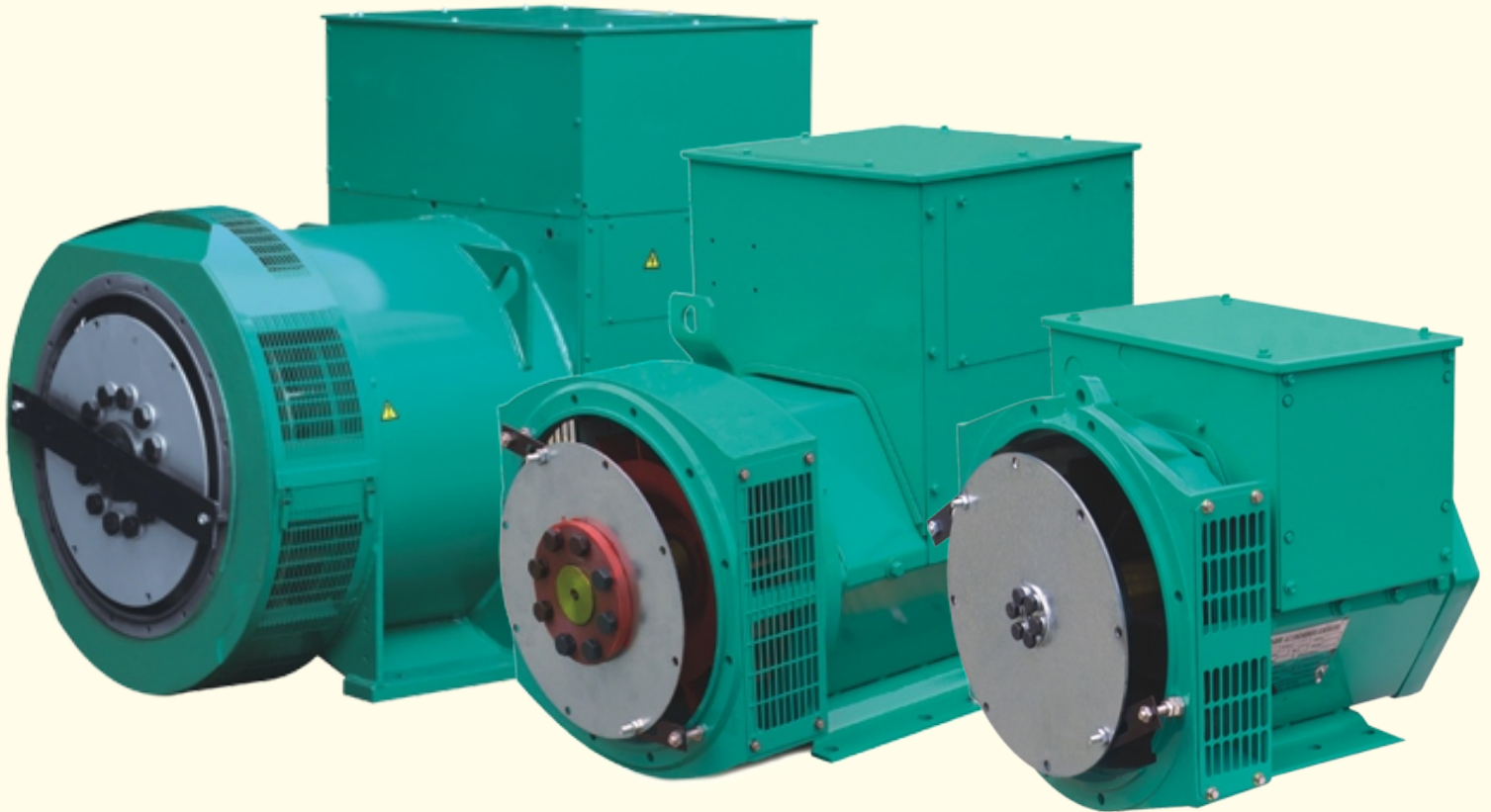
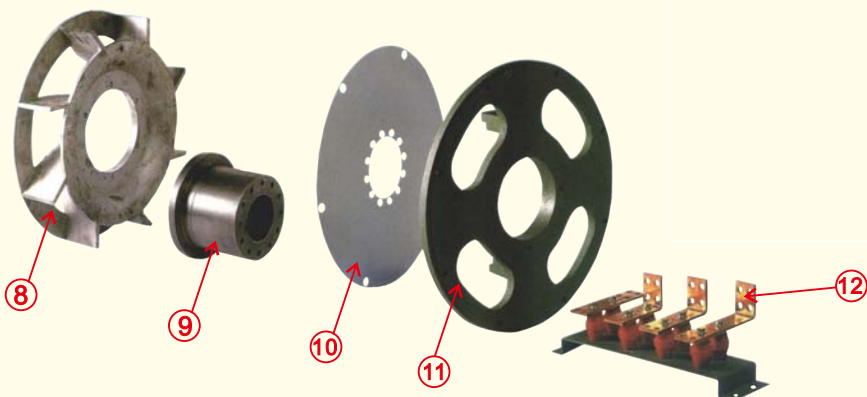
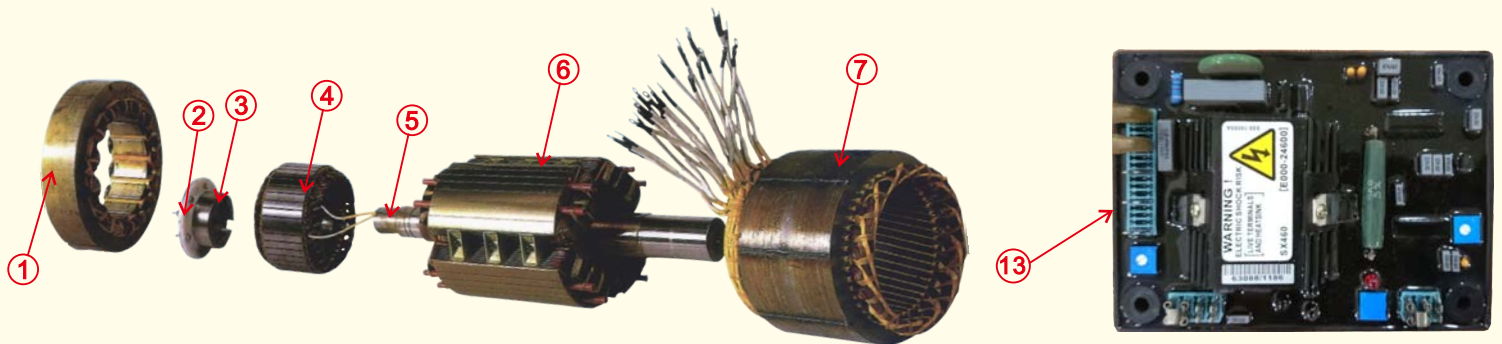


發電機

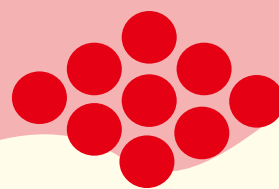


發電機結構說明



NO	名 稱	NO	名 稱
1	激磁定子	8	風扇
2	整流器	9	連結套
3		10	可撓性盤片
4	激磁轉子	11	磁場固定座
5	主軸	12	接線座
6	轉子	13	電壓調整器
7	定子		

發電機規格表



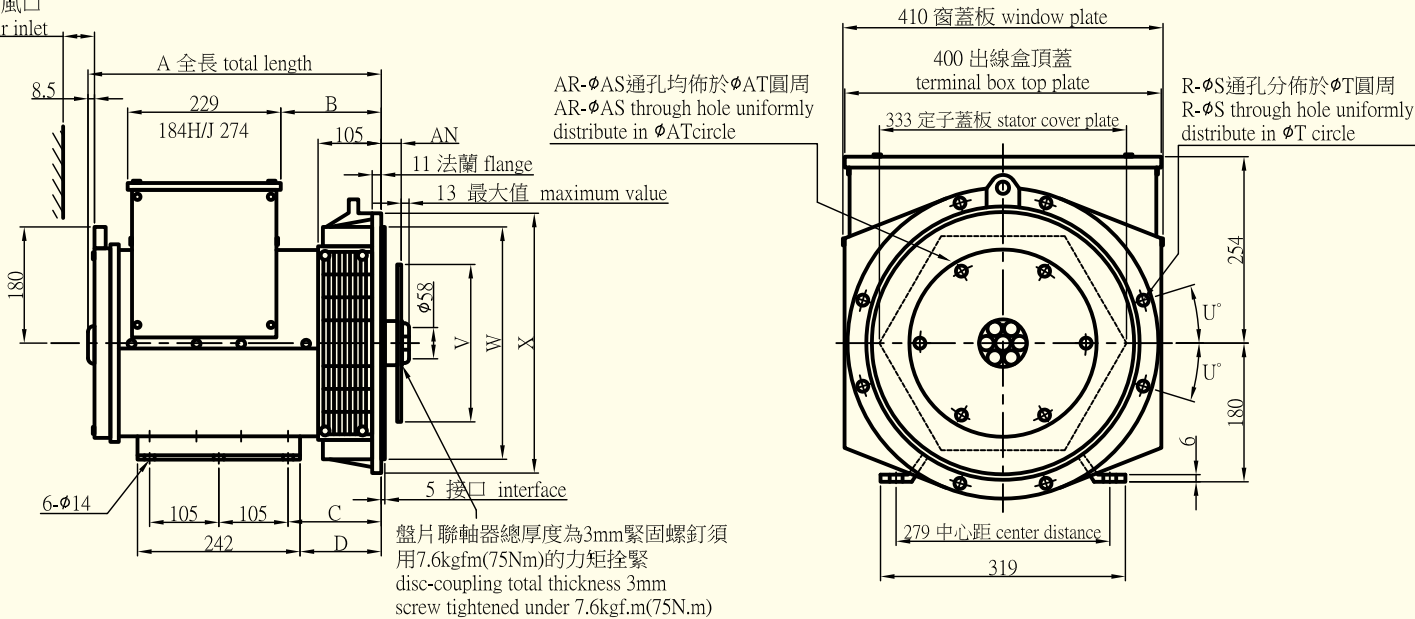
九如牌
EVERGUSH®

發電機規格表

頻率60Hz 功率因數PF=0.8 (H CLASS)							
型號 Model	Base Continuous Rating		Peak Stand-by Rating				效率(%)
	40 °C Ambient		40 °C Ambient		27 °C Ambient		
	kVA	kW	kVA	kW	kVA	kW	
ELG184E	27.5	22.0	28.9	23.1	30.3	24.2	84.2
ELG184F	32.5	26.0	34.1	27.3	35.8	28.6	85.8
ELG184G	37.5	30.0	39.4	31.5	41.3	33.0	86.2
ELG184H	43.5	34.8	45.7	36.5	47.9	38.3	86.6
ELG184J	47.5	38.0	49.9	39.9	52.3	41.8	86.7
ELG224C	55.0	44.0	58.1	46.5	60.0	48.0	86.1
ELG224D	62.5	50.0	65.0	52.0	66.3	53.0	87.0
ELG224E	70.0	56.0	73.8	59.0	75.0	60.0	87.8
ELG224F	85.0	68.0	89.4	71.5	92.0	73.6	89.0
ELG224G	100.0	80.0	102.5	82.0	106.3	85.0	89.5
ELG274C	125.0	100.0	128.1	102.5	131.3	105.0	89.2
ELG274D	131.3	105.0	137.5	110.0	142.5	114.0	89.5
ELG274E	160.0	128.0	170.0	136.0	175.0	140.0	90.4
ELG274F	180.0	144.0	186.0	148.8	190.0	152.0	91.1
ELG274G	200.0	160.0	206.3	165.0	212.5	170.0	91.3
ELG274H	237.5	190.0	250.0	200.0	256.3	205.0	92.2
ELG274J	268.8	215.0	287.5	230.0	293.8	235.0	91.8
ELG274K	293.8	235.0	302.5	242.0	312.5	250.0	91.6
ELG314C	293.8	253.0	302.5	242.0	312.5	250.0	91.6
ELG314D	350.0	280.0	362.5	290.0	375.0	300.0	91.9
ELG314E	393.8	315.0	406.3	325.0	412.5	330.0	92.6
ELG314EL	412.5	330.0	437.5	350.0	450.0	360.0	92.4
ELG314F	456.3	365.0	482.5	386.0	500.0	400.0	92.5
ELG354B	500.0	400.0	535.0	428.0	550.0	440.0	92.6
ELG354C	525.0	420.0	537.5	430.0	562.5	450.0	93.0
ELG354D	593.8	475.0	610.0	488.0	625.0	500.0	93.5
ELG354E	712.5	570.0	735.0	588.0	750.0	600.0	93.8
ELG354FS	725.0	580.0	750.0	600.0	787.5	630.0	94.0
ELG354F	775.0	620.0	806.3	645.0	812.5	650.0	94.1

ELG184

50最小進風口
minimum air inlet



尺寸 Dimension (mm)											
型號 Model	A				B				N.W (kg)	G.W (kg)	L×W×H (mm)
	SAE2	SAE3	SAE4	SAE5	SAE2	SAE3	SAE4	SAE5			
ELG184E	471	443.5	431.5	443.5	186	159	147	159	120	133	565×485×620
ELG184F	533.5	521.5	533.5	553.5	276	249	237	269	150	156	675×510×620
ELG184G	533.5	521.5	533.5	553.5	276	249	237	269	156	172	675×510×620
ELG184H	620.5	593.5	581.5	613.5	291	264	252	284	216	226	740×510×620
ELG184J	620.5	593.5	581.5	613.5	291	264	252	284	226	236	740×510×620

法蘭式過度配合 Flange (mm)									
S.A.E.NO.	AW	R	S	T	U°	W	X	C	D
2	132.3	12	11	466.7	15	447.6	489	172	156
3	105	8**	11	428.6	15	409.5	451	145	129
4	93	8	11	381.0	15	361.9	402	133	117
5	125(105)***	8	11	333.3	22.5	314.3	356	165(145)***	149(129)***
6*	136.7	8	11	285.8	22.5	266.7	308	176.7	160.7

注:*SAE6需另加一厚31.7mm的過度板,故A尺寸也相應增加31.7mm

**SAE3的8個孔分佈於12等分的圓周上

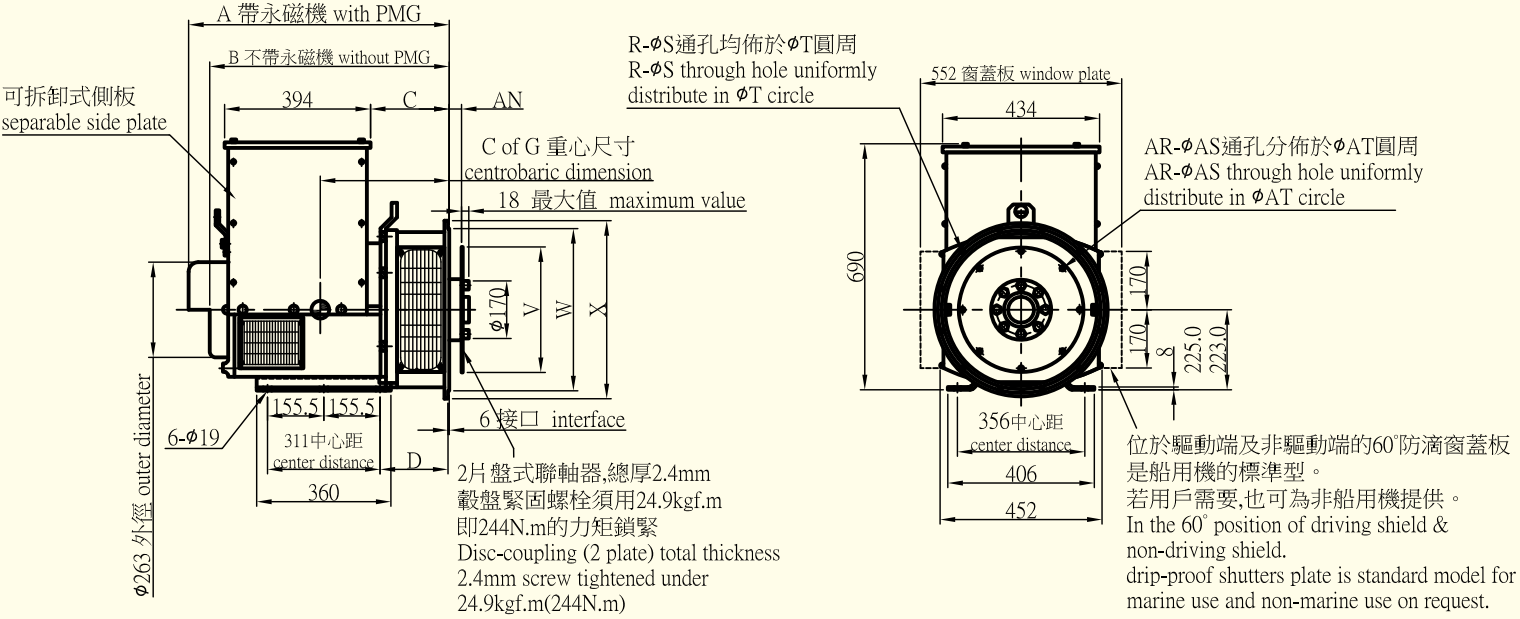
***SLG184E的AW尺寸為105,C尺寸為145,D尺寸為129

盤片式聯軸器 Disc Coupling (mm)					
S.A.E.NO.	AN	AR	AS	AT	V
6.5 _Δ	30.16	6	8.7	200.0	215.8
7.5 _Δ	30.16	8	8.7	222.2	241.2
8	61.9	6	11	244.5	263.4
10	53.98	8	11	295.3	314.2
11.5	39.68	8	11	333.4	352.3
14 _Δ	25.4	8	13.5	438.2	466.5

注:*SAE14僅適用於SLG184H/J鐵心;SAE6.5,7.5不適用SLG184H/J鐵心



ELG224



尺寸 Dimension (mm)

型號 Model	A		B		C		C of G		L×W×H (mm)	
	SAE2.4	SAE3	SAE2.4	SAE3	SAE2.4	SAE3	SAE2.4	SAE3	SAE2.4	SAE3
ELG224C	734	710	671	647	233.5	210	323	311	820×540×870	820×540×870
ELG224D	734	710	671	647	233.5	210	333	321	820×540×870	820×540×870
ELG224E	824	800	761	737	323.5	300	348	336	890×540×870	890×540×870
ELG224F	824	800	761	737	323.5	300	358	346	890×540×870	890×540×870
ELG224G	869	845	806	782	368.5	345	373	361	930×540×875	930×540×875

法蘭式過度配合 Flange (mm)

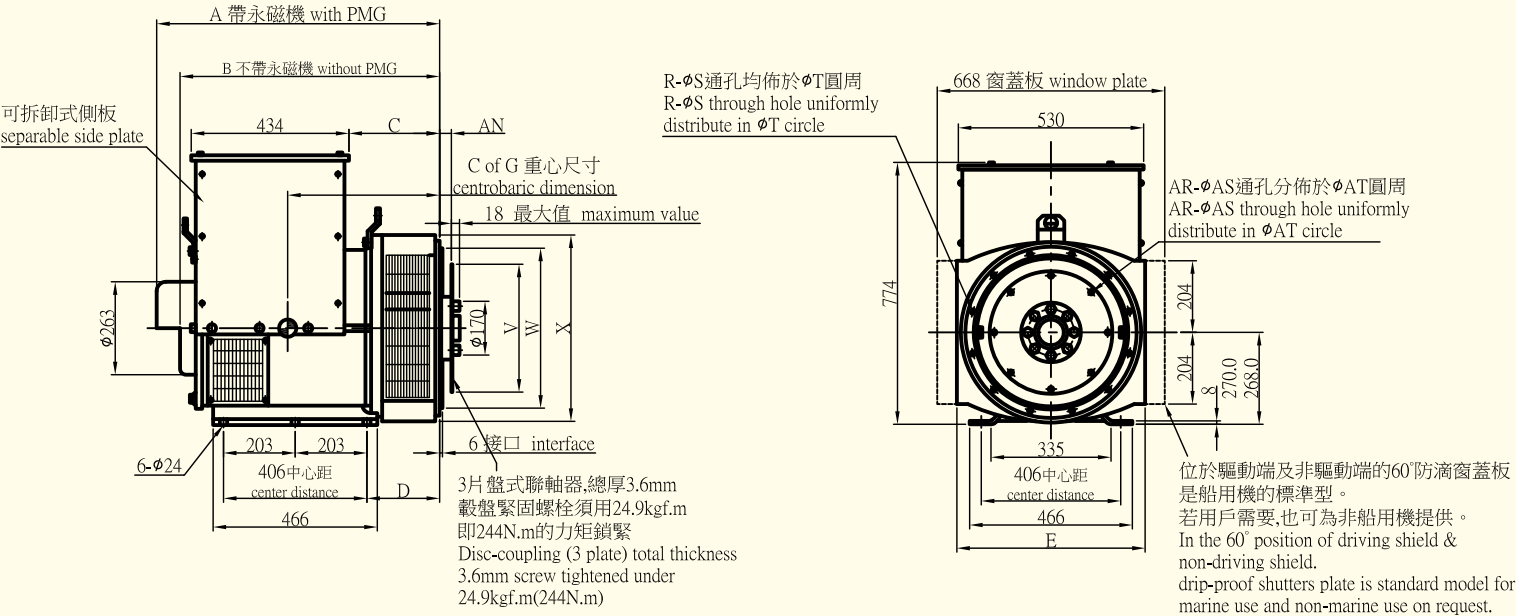
S.A.E.NO.	D	R	S	T	W	X
2	200.5	12	11	466.7	447.6	490
3	177	12	11	428.6	409.5	451
4	200.5	12	11	381.0	361.9	451

盤片式聯軸器 Disc Coupling (mm)

S.A.E.NO.	AN	AR	AS	AT	V
8	61.9	6	11	244.4	263.4
10	53.98	8	11	295.3	314.2
11.5	39.68	8	11	333.3	352.3
14	25.40	8	13.5	438.2	466.6



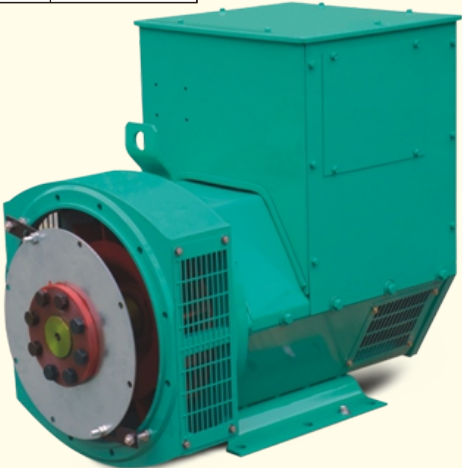
ELG274C~H



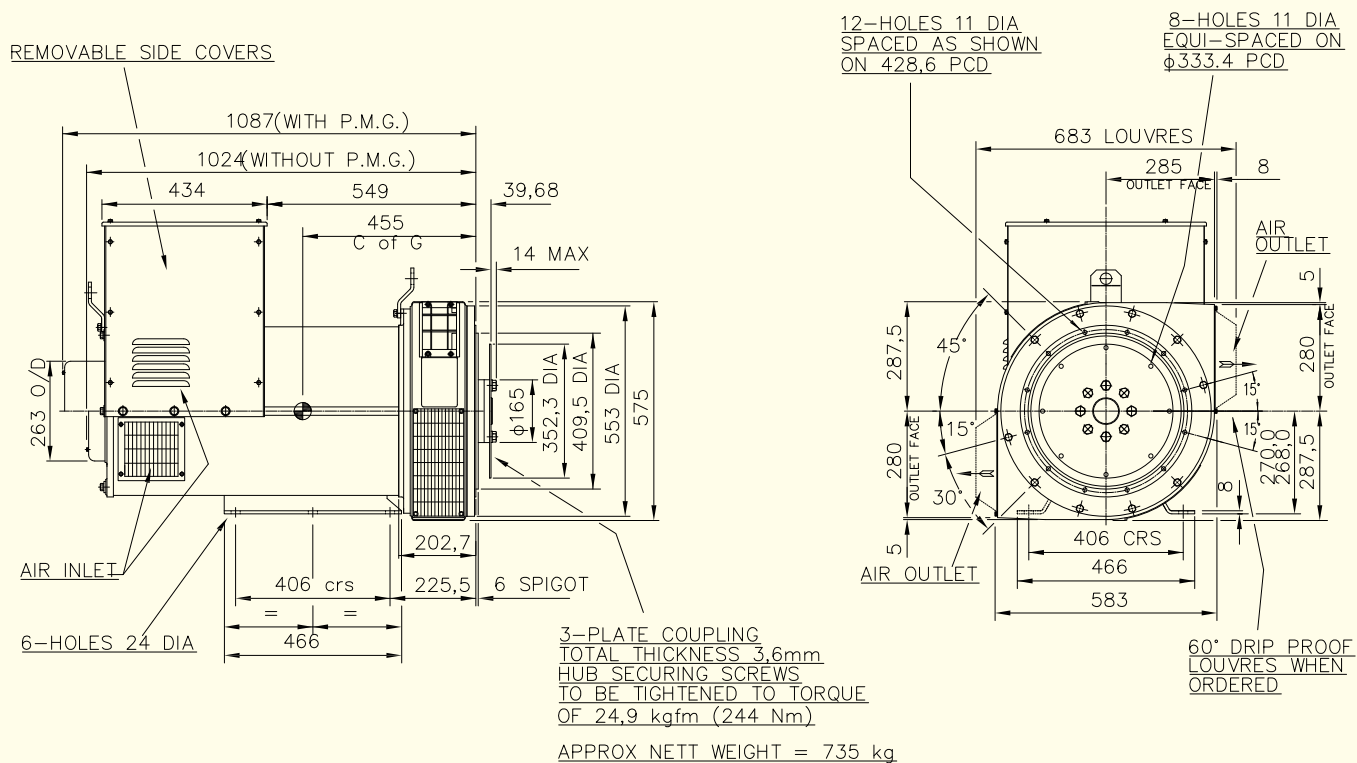
尺寸 Dimension (mm)											
型號 Model	A		B		C		E		C of G		LxWxH (mm) SAE1~3
	SAE1	SAE2&3	SAE1	SAE2&3	SAE1	SAE2&3	SAE1	SAE2&3	SAE1	SAE2&3	
ELG274C	813.3	799	750.3	736	274.3	260	554	544	365	398	900x650x975
ELG274D	813.3	799	750.3	736	274.3	260	554	544	375	422	900x650x975
ELG274E	928.3	914	865.3	851	389.3	375	554	544	390	489	1020x650x975
ELG274F	928.3	914	865.3	851	389.3	375	554	544	415	527	1020x650x975
ELG274G	978.3	964	915.3	904	439.3	425	554	544	435	579	1080x650x975
ELG274H	1018.3	1004	955.3	941	479.3	465	554	544	455	625	1110x650x975

法蘭式過度配合 Flange (mm)							
S.A.E.NO.	D	R	S	T	W	X	Y
1	216.3	12	12.7	530.2	511.1	553	580
2	202	12	11	466.7	447.6	490	530
3	202	12	11	428.6	409.5	451	530

盤片式聯軸器 Disc Coupling (mm)					
S.A.E.NO.	AN	AR	AS	AT	V
10	53.98	8	11	295.3	314.2
11.5	39.68	8	11	333.3	352.3
14	25.40	8	13.5	438.2	466.6



ELG274J/K

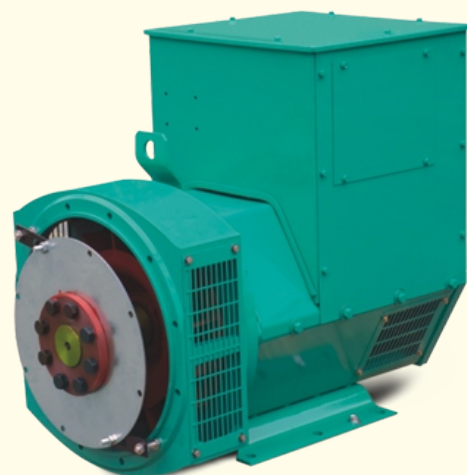


法蘭式過度配合 Flange (mm)

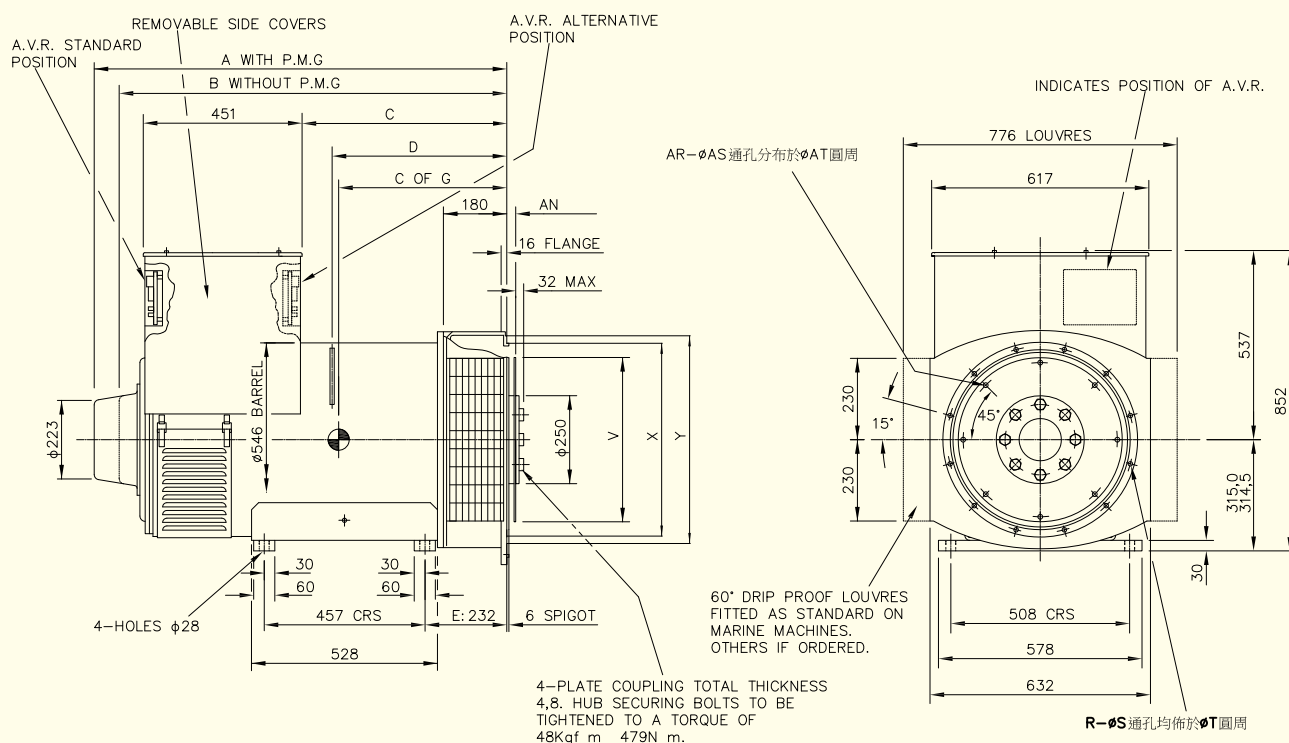
S.A.E.NO.	A	B	C	D	R	S	T	W
1	1063	1000	525	202	12	12.7	530.2	511.1
2	1063	1000	525	202	12	11	466.7	447.6
3	1086.5	1023.5	548.5	225.5	12	11	428.6	409.5

盤片式聯軸器 Disc Coupling (mm)

S.A.E.NO.	AN	AR	AS	AT	V
11.5	39.68	8	11	333.3	352.3
14	25.40	8	13.5	438.2	466.6



ELG314



尺寸 Dimension (mm)

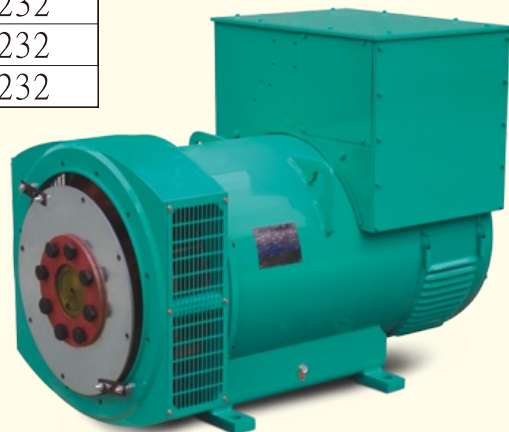
型號 Model	A		B		C		D		C of G	LxWxH (mm)
	SAE 1/2/0.5	SAE0	SAE 1/2/0.5	SAE0	SAE 1/2/0.5	SAE0	SAE 1/2/0.5	SAE0	SAE0/0.5/1/2	SAE0/0.5/1/2
ELG314C	1172	1202	1101	1131	584	614	493	523	463	1370x740x1090
ELG314D	1172	1202	1101	1131	584	614	493	523	483	1370x740x1090
ELG314E	1172	1202	1101	1131	584	614	493	523	504	1370x740x1090
ELG314EL	1172	1202	1101	1131	584	614	493	523	525	1370x740x1090
ELG314F	1262	1292	1191	1221	674	704	583	613	530	1470x740x1090
ELG314G	1262	1292	1191	1221	674	704	583	613	550	1470x740x1090

法蘭式過度配合 Flange (mm)

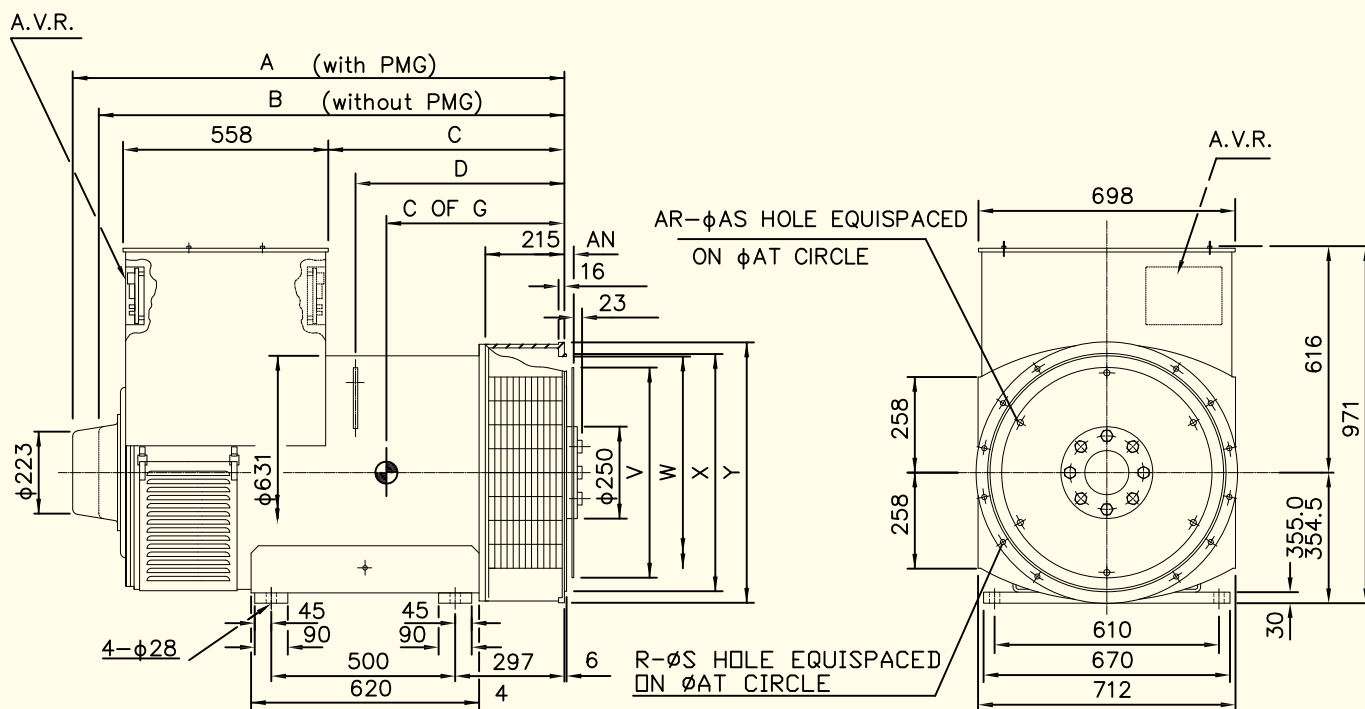
S.A.E.NO.	R	S	T	X	Y	E
0	12	14	679.5	647.6	711	232
0.5	12	14	619.1	584.1	680	232
1	12	12.7	530.2	511.1	617	232
2	12	11	466.7	447.6	617	232

盤片式聯軸器 Disc Coupling (mm)

S.A.E.NO.	AN	AR	AS	AT	V
11.5	39.68	8	11	333.4	352.3
14	25.40	8	13.5	438.1	466.6
18	15.87	6	16.7	543.0	571.4



ELG354



尺寸 Dimension (mm)

型號 Model	A	B	C	D	C of G	L×W×H (mm)
ELG354C	1337	1266	642	568	555	1430×830×1230
ELG354D	1337	1266	642	568	575	1430×830×1230
ELG354E	1337	1266	642	568	595	1430×830×1230
ELG354FS	1412	1341	717	643	620	1500×830×1230
ELG354F	1412	1341	717	643	620	1500×830×1230

法蘭式過度配合 Flange (mm)

S.A.E.NO.	R	S	T	X	Y
00	12	14	850.9	787.3	882
0	12	14	679.5	647.6	711
0.5	12	14	619.1	584.1	700
1	12	12.7	530.2	511.1	700

盤片式聯軸器 Disc Coupling (mm)

S.A.E.NO.	AN	AR	AS	AT	V
14	25.40	8	13.5	438.2	466.6
18	15.87	6	16.7	543.0	571.4
21	0	12	16.7	641.3	673.0

